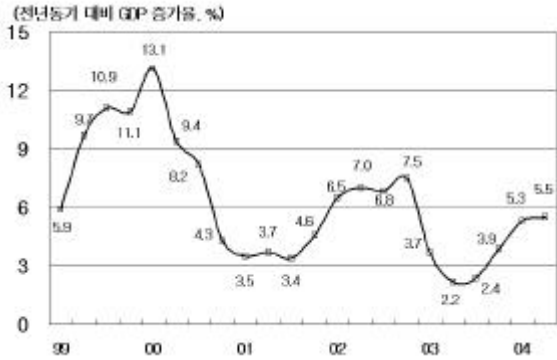


# 월간 경제 동향 및 분석

- 
- ❖ 國內總生産 1人當 GNI
  - ❖ 産業 活動
  - ❖ 國內 金融 指標
  - ❖ 國際 金融 指標
  - ❖ 雇傭
  - ❖ 對外 去來
  - ❖ 物價
  - ❖ 2005年 巨視 經濟 展望
-

□ 國內總生產 1人當 GNI

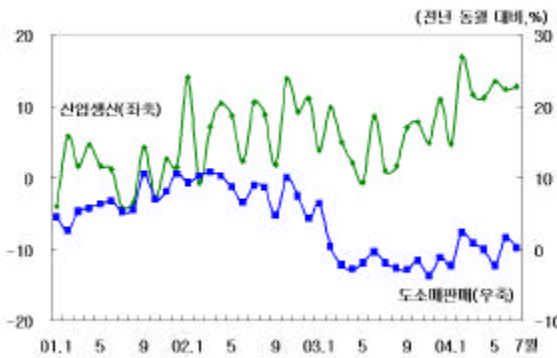


2004 2/4 가 , 가 가  
 가 , 가 5.5%  
 (base effect) , 가  
 가,  
 가

		2002	2003(P)	2004.1/4	2/4	2004(E)	2005(E)	
( )		6843	7214	178.7	192.2	782.7	846.1	
		5,469	6,052	-	-	6,703	7,691	
1	GNI	11,493	12,646	-	-	13,820	15,872	
	GDP	, %	7.0	3.1	5.3	5.5	4.9	4.5
			7.9	- 1.4	- 1.4	-0.7	0.5	2.0
			7.5	- 1.5	-0.3	6.2	3.1	4.0
			5.3	7.6	4.1	3.8	2.9	2.5

: (P) , (E)

□ 産業活動

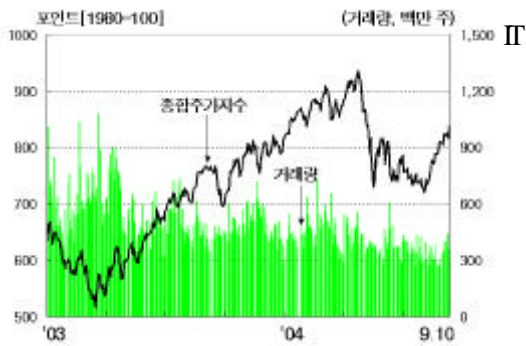
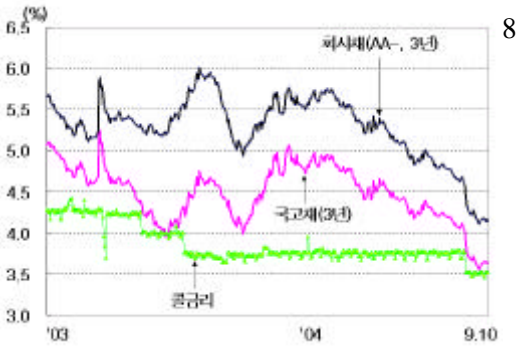
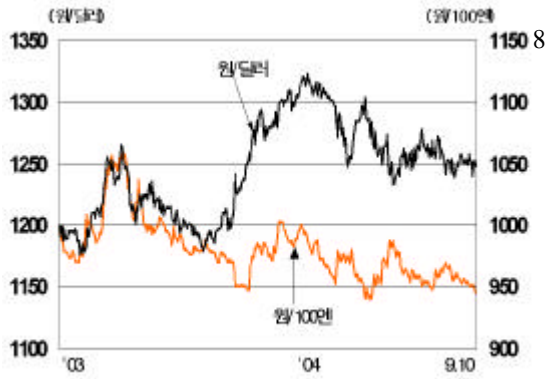


7 ,  
 12.8% 가  
 2.5% 0.2% 가  
 -3.3% -6.4%  
 가

		2001	2002	2003		2004			
				4/4	1/4	2/4	6	7	
	(%)	0.7	8.0	5.1	7.8	11.0	12.3	12.4	12.8
		6.6	8.3	- 1.0	-2.0	0.1	-0.3	1.6	0.2
		- 1.0	21.0	-8.5	-5.0	19.0	18.6	18.1	-6.4
		22.1	33.0	22.5	2.1	- 14.2	-27.7	-36.9	-3.3
가 (%)	75.3	78.4	78.3	80.4	81.5	80.5	79.8	79.4	
( ,%)	0.23	0.06	0.08	0.06	0.05	0.07	0.06	0.04	

: 1) 가 2000 , 2)

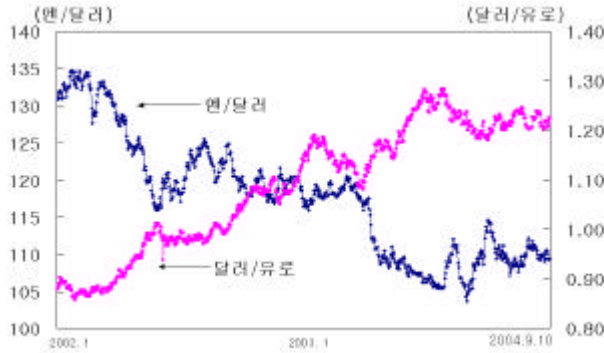
## 國內金融指標



		2003				2004				
		Q1	Q2	Q3	Q4	Q1	Q2	7	8.9	9.10
가 (%)	M2( )	7.7	7.2	6.4	4.7	6.9	4.4	3.2	2.8	-
	(1 )	4.26	4.00	3.75	3.95	3.74	3.78	3.77	3.77	3.53
(% )	CP (91 )	4.59	4.69	4.11	4.55	4.08	4.02	4.02	4.02	3.69
	(3 )	5.17	5.18	5.05	5.58	5.30	4.84	4.65	4.64	4.16
/		1,218.7	1,195.4	1,150.1	1,192.6	1,146.6	1,155.5	1,170.0	1,156.3	1,145.1
가		546.02	650.35	697.52	810.71	880.50	785.79	735.34	742.13	821.88

: 1) 가 ( ) 2) , 가 .

## □ 國際金融指標



7  
가  
가  
가  
가  
가  
( : p, % , , )

		2003			2004				
		Q2	Q3	Q4	Q1	Q2	7	8.9	9.10
Dow Jones	가	8,985.4	9,380.2	10,453.9	10,470	10,435.5	10,139.7	9,814.7	10,313.1
	(10 )	3.52	4.08	4.26	4.15	4.59	4.48	4.26	4.19
	(30 )	4.56	5.01	5.13	4.98	5.30	5.20	5.06	4.98
		1.08	1.03	0.93	1.03	1.13	1.30	1.32	1.49
(%)	LIBOR(3 )	1.12	1.16	1.15	1.11	1.61	1.70	1.67	1.87
	(10 )	0.85	1.44	1.37	1.44	1.79	1.86	1.63	1.52
	/	119.77	110.78	107.30	104.50	108.78	111.34	110.61	109.64
	/	1.1508	1.1595	1.2594	1.2136	1.2200	1.2015	1.2275	1.2265
	/100	996.4	1,031.51	1,119.6	1,100.9	1,064.0	1,041.6	1,054.6	1,048.0

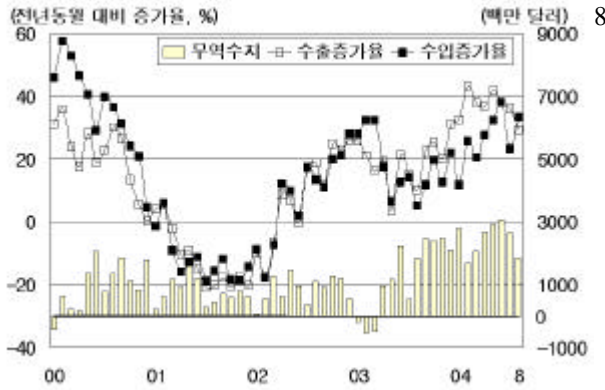
## 僱傭



7  
6  
0.3%p  
3.5%,  
0.1%p  
3.6%  
가  
5 1,000  
(6.7%) 81 4,000  
15 29  
0.2%p  
0.1%p  
7.6%  
38 6,000  
47.4%  
가

	2002	2003			2004				2005(E)
		4/4	1/4	2/4	6	7	(E)		
(%)	3.1	3.4	3.4	3.8	3.3	3.2	3.5	3.5	3.6
( )	708	777	794	878	787	763	814	850	880
( )	22,169	22,139	22,325	22,104	22,744	23,585	23,564	23,700	23,720

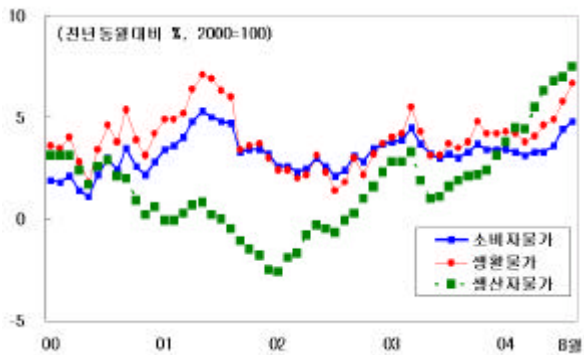
## □ 對外 去來



198.8 29.3%, 가  
 180.4 33.3% 가  
 18.4  
 가 5 3 가  
 逆 base effect, 가 가  
 ( : 億 )

	2002	2003	2004. 1/4	2/4	7	8	2004(E)	2005(E)
	1,624.7	1,938.2	592.8	639.5	210.4	198.8	2,485	2,809
	1,521.3	1,788.3	527.4	552.7	183.6	180.4	2,240	2,614
	53.9	123.2	61.5	70.4	32.3	-	200	140
	147.8	221.6	86.1	104.1	41.5	-	-	-
	-82.0	-76.1	-18.8	-15.1	-7.7	-	-	-
	4.3	6.0	2.3	-11.6	0.1	-	-	-
	-16.2	-28.2	-8.0	-7.1	-1.6	-	-	-
	62.5	131.3	26.5	-32.3	-11.8	-	-	-
가	1,214.1	1,553.5	1,635.6	1,670.3	1,680.1	1,704.9	-	-

## □ 物價



가 가 가  
 , 가 가  
 , 가 , 0.9%,  
 가 가 가  
 가 가 4.8% 가 2001 7 가  
 가 가 6.7% .  
 가 가 ,

	2002	2003	2004				2005(E)
			1/4	2/4	7	8 (E)	
가	2.7	3.6	3.1	3.6	4.4	4.8	3.4
가	-0.3	2.2	4.4	6.8	7.0	7.5	-
가	2.5	4.1	3.8	4.9	5.8	6.7	-
WTI 가(\$/bbl, )	31.2	32.5	35.8	37.1	43.8	42.1	-

		1999	2000	2001	2002	2003(P)	2004(E)	2005(E)
	(%)	9.5	8.5	3.8	7.0	3.1	4.9	4.5
	(%)	9.7	7.1	4.9	7.6	-0.5	1.0	2.5
	(%)	11.5	8.4	4.9	7.9	-1.4	0.5	2.0
	(%)	8.3	12.2	-0.2	6.6	3.6	2.4	2.6
	(%)	-3.7	-0.7	6.0	5.3	7.6	2.9	2.5
	(%)	36.8	33.6	-9.0	7.5	-1.5	3.1	4.0
( )	( \$ )	245	122	80	54	123	200	140
	( \$ )	239	118	93	103	150	245	195
	( \$ )	1,437	1,723	1,504	1,625	1,938	2,485	2,809
	가 (%)	(8.6)	(19.9)	(-12.7)	(8.0)	(19.3)	(28.2)	(13.0)
	( \$ )	1,198	1,605	1,411	1,521	1,788	2,240	2,614
가 (%)	(28.4)	(34.0)	(-12.1)	(7.8)	(17.6)	(25.3)	(16.7)	
	가( ,%)	0.8	2.3	4.1	2.7	3.6	3.6	3.4
	(%)	6.3	4.1	3.8	3.1	3.4	3.5	3.6
	/ \$ ( , )	1,190	1,131	1,291	1,250	1,192	1,130	1,100
	( )	9.1	6.7	5.9	5.1	4.8	3.8	3 4%