

I.

1.

- (8) ,
 () ,
 , 가 1.5% 가
 () 가 ,
 -2.7% , 7 가
 () 20.9% 가
 , -7.8%

- (9 가) 가
 0.9% (3.3%)
 8 ,
 가
 . 가 1.1% (3.8%) ,
 (Core) 0.2%
 (3.1%)
 < (, %) >

	2001	2002					2003					
		1/4	2/4	3/4	4/4	1/4	2/4	7	8	9	1 9	
GP	3.1	6.3	6.2	6.6	5.8	6.8	3.7	1.9	-	-	-	-
	6.6	8.3	10.2	8.6	7.4	7.1	1.5	-1.7	-1.9	-2.7	-	-
	-2.3	1.6	2.7	0.0	0.4	3.1	-3.4	-3.7	-11.1	-7.8	-	-
	22.1	21.3	77.5	10.1	6.6	12.7	-2.0	56.3	80.3	44.2	-	-
가	75.3	78.3	78.0	78.2	78.4	78.8	78.6	77.2	73.8	76.4	-	-
(\$)	86	61	16	16	9	20	-17	26	4	14	-	26 ()
(\$)	93	103	19	31	24	30	-12	44	6	19	26	83 ()
(FOB)	-12.7	8.0	-11.1	4.9	15.9	24.6	20.7	14.5	15.3	10.4	23.8	17.1()
(CIF)	-12.1	7.8	-11.4	7.8	13.8	23.1	30.8	12.1	14.0	5.1	12.3	17.3()
가	4.1	2.7	2.5	2.7	2.6	3.3	4.1	3.3	3.2	3.0	3.3	3.6()
	3.8	3.1	3.7	3.0	2.8	2.9	3.6	3.3	3.4	3.3	-	3.4()

: 1)

(2)

- (가)美가 ,日가
美·日가
美가 前週

日가 週中
가,

()美가

가 ,

.日가

耐性가

- ()가
/ ,107가

. /가
110

. / ECB

() / , 108
107가 8

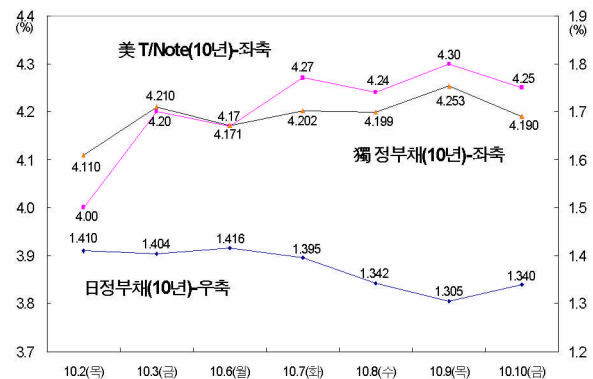
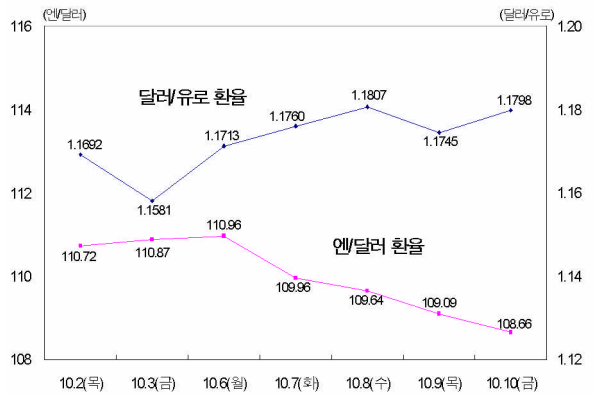
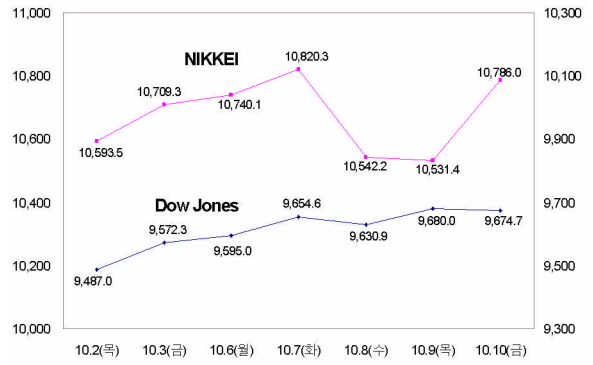
- ()美·獨 ,日

. 가

.獨

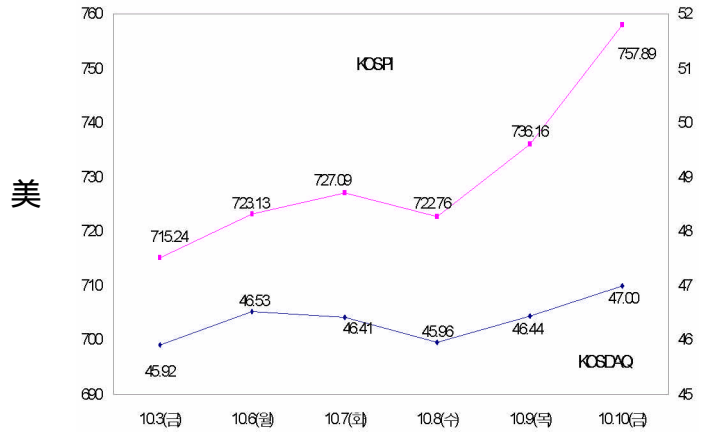
가 .日

()가

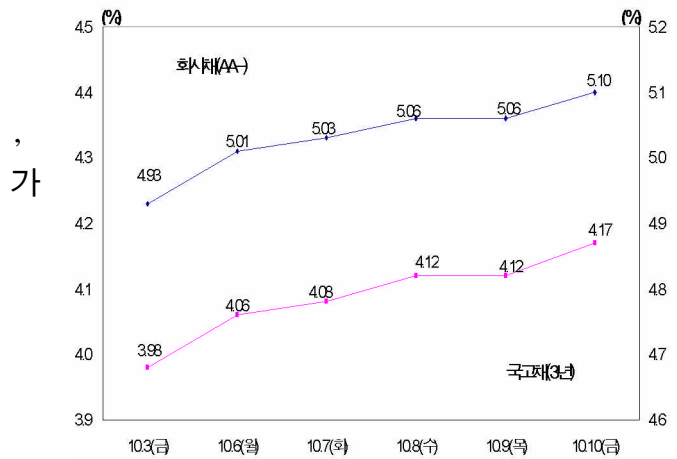


(3)

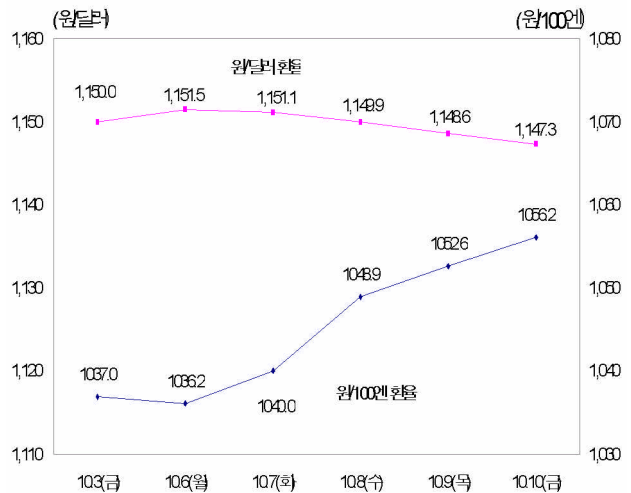
- (가)



- ()



- ()

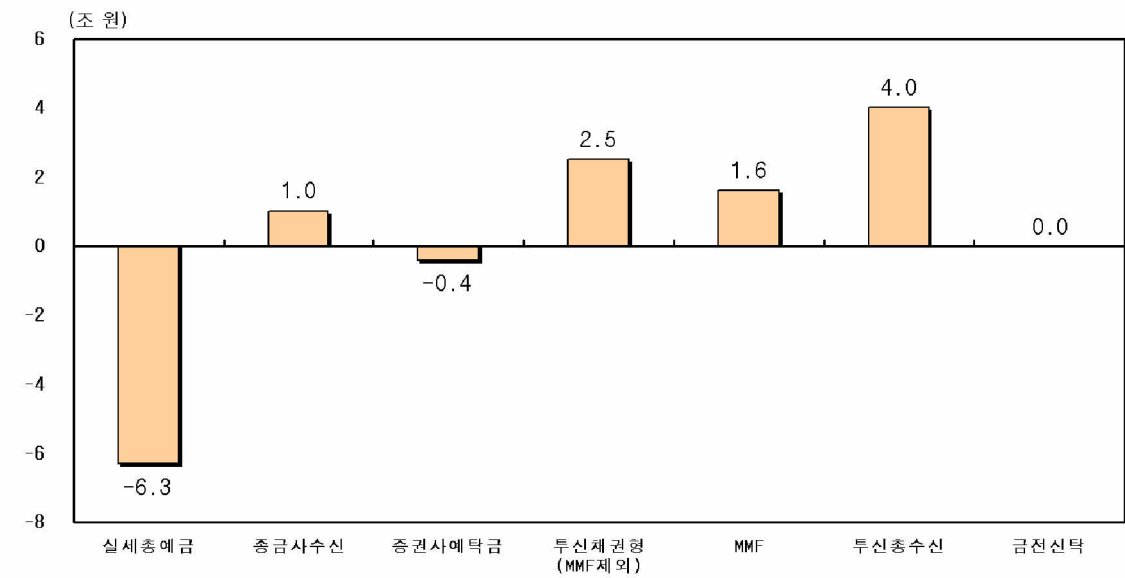


1,150

, /

()

- () 가
 .
 가 가
 < (9.30 10.7) >



: 9.30 10.9

- () 가
 .
 美 가
 < 가 (:) >

		2002	1/4	2/4	7	8	9.29 10.2	10.6 10
		25,529	8,666	23,781	27,776	20,085	3,142	12,338
		2,021	1,593	571	2,608	2,028	656	1,137
	¹⁾	4,564	2,660	5,947	5,415	1,333	319	200
		18,944	7,599	30,299	24,969	23,446	4,118	13,675

1) : 1 2,682

2) : 38.6%(114.5), 10.7%(4.1)

: , .

< () >

	2002	6	7	8	9.29	10.7
	484.7	498.7	500.2	504.9	501.4	495.1
	457.9	500.1	503.4	510.2	514.0	515.4
(-)	26.8	-1.4	-3.2	-5.3	-13.6	-20.3
	43.7	40.9	38.8	40.2	41.8	38.3
	441.1	457.8	461.4	464.7	459.6	456.8
CD	18.3	23.4	24.7	25.6	27.1	27.1
	636.3	709.5	711.7	717.4	719.1	708.6
	7.4	8.9	8.6	8.6	7.4	8.4
CM	1.4	1.5	1.7	1.6	1.5	1.7
	17.1	11.8	11.2	11.2	10.8	10.6
()	17.1	11.8	11.2	11.2	10.8	10.6
	25.9	22.2	21.5	21.3	19.7	20.7
	22.5	17.7	17.2	17.2	16.9	16.2
	8.1	10.4	10.2	10.0	9.3	8.9
R P	3.1	4.2	4.2	4.7	4.6	4.7
	23.9	25.5	25.0	24.4	24.0	23.9
	36.0	36.8	37.2	36.0	33.9	36.3
MMF	49.2	36.9	46.3	48.2	47.7	49.3
	13.5	12.9	12.0	11.4	11.5	11.5
	31.7	24.2	23.4	24.3	24.5	24.7
	9.3	10.2	9.9	9.6	9.4	9.3
	163.6	146.6	153.8	153.9	160.1	155.0
	70.4	61.1	59.4	58.7	58.1	58.1
()	32.2	28.1	27.1	26.9	26.9	27.0
()	6.3	5.4	5.2	5.1	4.9	4.9
()	2.6	2.1	2.2	2.1	2.1	2.1
(7b)	3.6	3.1	3.1	3.1	3.1	3.2

: 「 」 〇 」 , 「 」 + 「

9.23 10.01

: ,