

I.

1.

- (11) 22.5% 가 186.2 ,
 12.6% 가 157.6
 11 28.6 , 134.5
 () (22.1% , (38.1%)
 , 對中 (51.2%)
 (0.6% EU(6.1%)
 () 가 가 (5.8
) , (16.8%) (12.8%) 가
 - (11 가) 0.2% , 3.4%
 . . 가 (-2.4%)
 . 가 -0.5% (4.2%) ,
 0.1% (2.7%)
 < >
 (, %)

	2001	2002				2003					
			2/4	3/4	4/4	1/4	2/4	3/4	10	11	1 11
GP	3.1	6.3	6.6	5.8	6.8	3.7	1.9	2.3	-	-	2.6(1 3)
	6.6	8.3	8.6	7.4	7.1	1.5	-1.7	-2.5	-1.7	-	-
	-2.3	1.6	0.0	0.4	3.1	-3.4	-3.7	-7.0	-3.8	-	-
	22.1	21.3	10.1	6.6	12.7	-2.0	56.3	52.3	18.8	-	-
가	75.3	78.3	78.2	78.4	78.8	78.6	77.2	76.4	81.1	-	-
(\$)	86	61	16	9	20	-17	25	41	25	-	74 ()
(\$)	93	103	31	24	30	-12	44	50	25	29	135 ()
(FOB)	-12.7	8.0	4.9	15.9	24.6	20.7	14.4	16.1	25.7	22.5	18.4()
(CIF)	-12.1	7.8	7.8	13.8	23.1	30.9	12.1	10.4	19.5	12.6	17.0()
가	4.1	2.7	2.7	2.6	3.3	4.1	3.3	3.3	3.7	3.4	3.6()
	3.8	3.1	3.0	2.8	2.9	3.6	3.3	3.3	3.3	-	3.4()

:

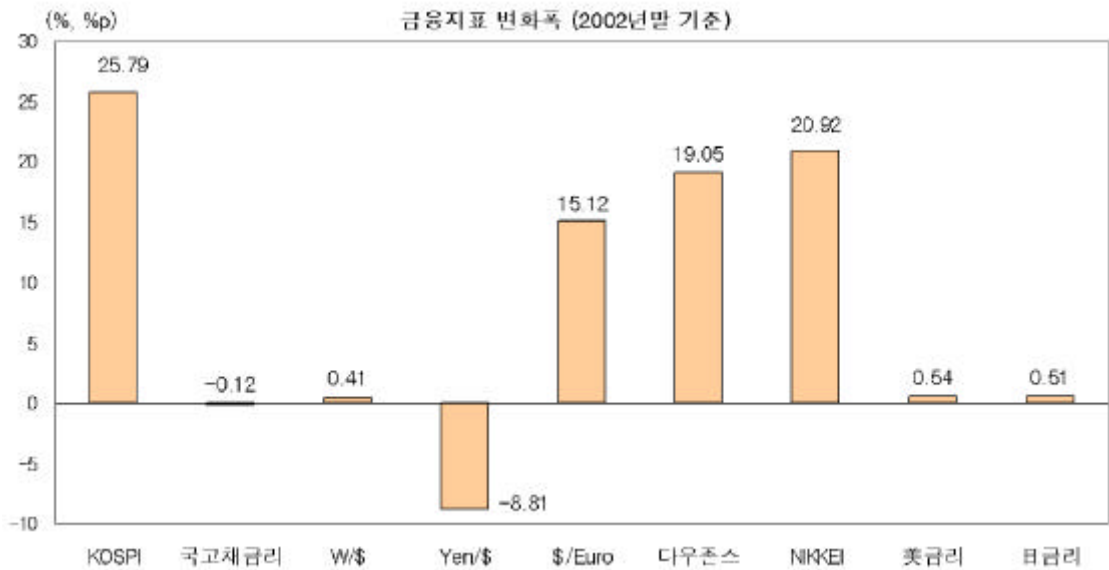
2.

(1)

- () 美 가 , 가

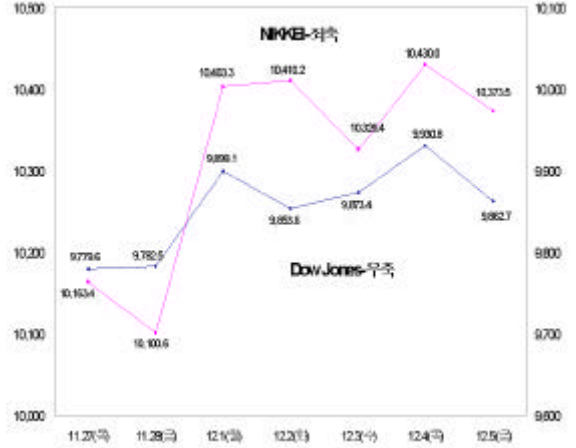
- () 가 ,

		2002	2003				
			8	9	10	11.28	12.5
	(, %)	4.52	3.70	3.75	3.83	3.77	3.74
	(3 , %)	5.11	4.46	4.11	4.48	4.88	4.99
	(3 , %)	5.68	5.60	5.05	5.32	5.60	5.70
	(- , %p)	0.59	0.76	0.36	0.65	1.11	1.25
	(-)	0.57	1.14	0.94	0.84	0.72	0.71
가	가	627.55	759.47	697.52	782.36	796.18	789.38
	()	82,573	43,125	16,126	48,431	59,753	56,068
	()	21,363	24,085	20,585	22,912	25,687	26,986
	/ (₩/\$)	1,186.2	1,178.2	1,150.1	1,183.1	1,202.1	1,191.1
	/ (Yen/\$)	118.79	116.80	111.48	108.90	109.63	108.32
	/ (\$/EURO)	1.0494	1.0901	1.1659	1.1592	1.1996	1.2081
가	(Dow Jones)	8,341.6	9,415.8	9,275.1	9,801.1	9,782.5	9,862.7
	(NIKKEI)	8,579.0	10,343.6	10,219.1	10,559.6	10,100.6	10,373.5
	美 (10)	3.81	4.46	3.94	4.30	4.32	4.35
	(10)	0.91	1.44	1.39	1.45	1.30	1.42



(2)

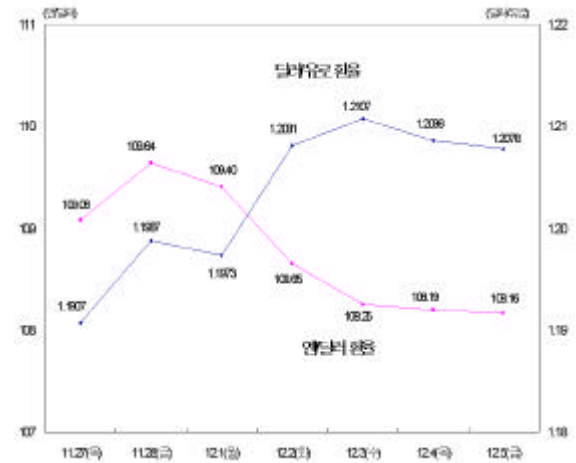
- (가) 美 가 , 日 가
 ■ 美 가 가 가
 美 가, 11 ISM



. 日 가,

() 美 가, '
 ' 가 가

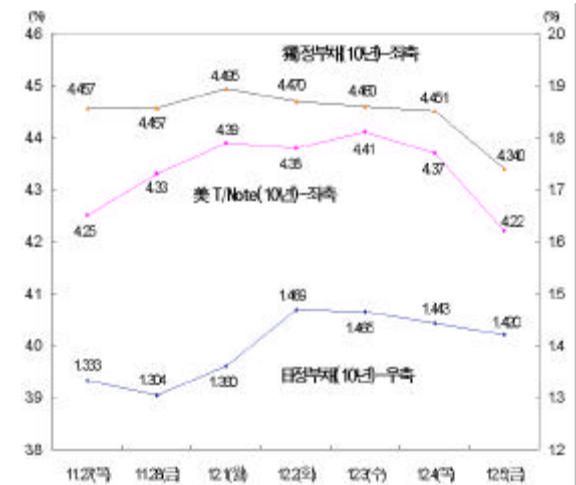
- ()
 ■ / , /
 美 , GDP
 10%



. ECB /

() ,
 ,

- () 美·獨 ,
 日 ■ 美
 美 ,



11

. 日 , 가

10

() 美 ,

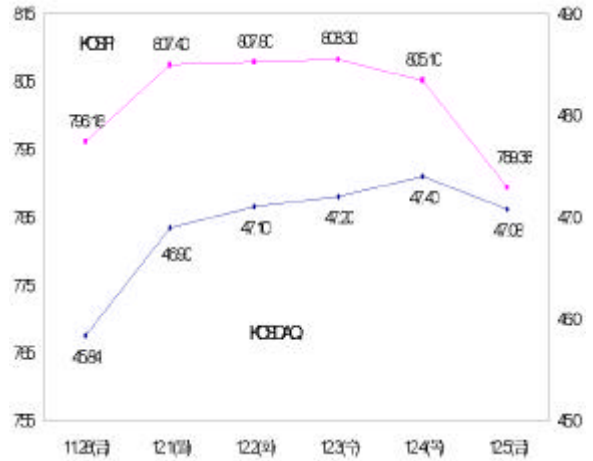
(3)

- (가)

11

美
(12.11)

()

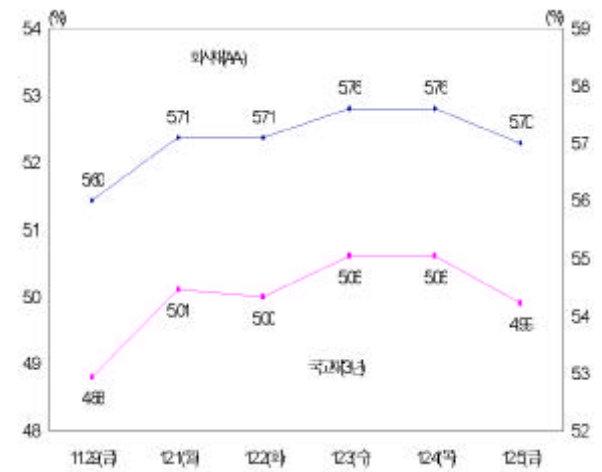


- ()

.

()

가



- ()

.

()

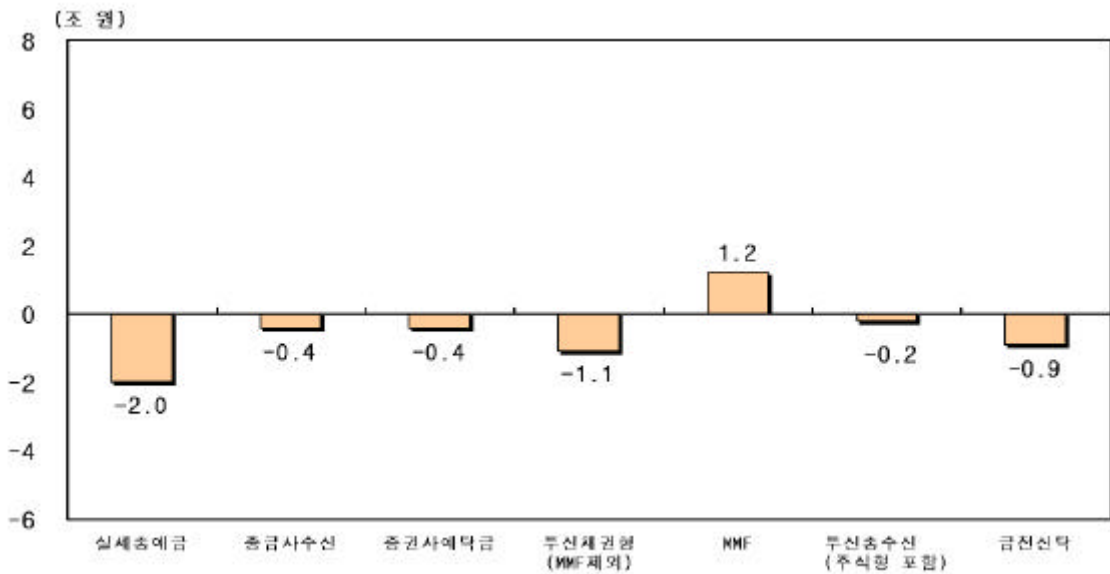
가



- ()
 . 發

가

< (11.26 12.2) >



: 11.26 12.4

: ,

- ()

. 가

,

가

< 가 (:) >

		2002	1/4	2/4	3/4	10	11.24 28	12.1 5
		■25,529	■8,666	23,781	63,504	31,599	3,141	4,383
		2,021	■1,593	571	5,313	2,369	383	1,046
	¹⁾	4,564	2,660	5,947	■2,987	2,914	400	202
		■18,944	■7,599	30,299	65,830	36,882	3,924	5,631

1) : 1 5,966

2) : 39.9%(139.1), 13.7%(5.5)

: , .

< () >

	2002	8	9	10	11.25	12.2
	484.7	504.9	501.4	501.7	516.6	514.6
	457.9	510.2	514.0	522.2	525.3	527.6
(-)	26.8	-5.3	-12.6	-20.5	-8.7	-7.0
	43.7	40.2	41.8	42.9	43.2	41.3
	441.1	464.7	459.6	458.8	473.4	473.3
CD	18.3	25.6	27.1	28.9	29.7	29.7
	636.3	717.4	719.1	724.4	730.0	731.2
	7.4	8.6	8.0	7.2	8.3	8.2
CM	1.4	1.6	1.5	1.6	1.7	1.9
	17.1	11.2	10.5	10.0	9.3	8.9
()	17.1	11.2	10.5	10.0	9.3	8.9
	25.9	21.3	20.1	18.8	19.4	19.0
	22.5	17.2	16.0	16.2	15.7	15.3
	8.1	10.0	9.1	9.8	10.1	9.7
R P	3.1	4.7	4.8	4.5	5.1	5.3
	23.9	24.4	24.0	22.3	21.9	21.6
	36.0	36.0	35.5	36.9	35.5	34.9
MMF	49.2	48.2	48.2	49.8	39.5	40.7
	13.5	11.4	11.6	11.4	10.8	10.6
	31.7	24.3	24.5	23.3	22.8	22.6
	9.3	9.6	9.3	8.8	8.4	8.3
	163.6	153.9	152.9	152.4	138.9	138.7
	70.4	58.7	58.1	57.2	56.4	55.5
()	32.2	26.9	26.9	26.5	26.3	25.7
()	6.3	5.1	4.9	4.8	4.7	4.6
()	2.6	2.1	2.1	2.0	2.1	2.1
(7b)	3.6	3.1	3.1	3.3	3.1	3.0

: 「 」 CD 「 」 + 「 」
 (11.25) 12.4
 :