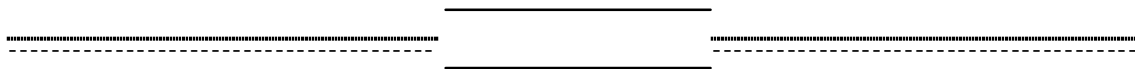


**2002.1/4**

- ( ) , 2002 1/4 2001 4/4 가 110 가 128.67
- (4/4 가) , 가 110 가
- (1/4 ) , 2002 1/4 가 128.67 126.00, 124.50
- ( ) 4/4 20 , 2002 1/4 . PC 가
- ( ) 20 4/4 가 , 1/4
- ( ) , . PC , 가 , 2002 1/4 .
- ( ) 5 4/4 , , 2002 1/4 가 가
- ( ) ‘ , ‘ , ‘ , ‘ , ‘ , ‘
- ( ) , 60% 가 ‘ , 가 , ‘ , ‘ , ‘

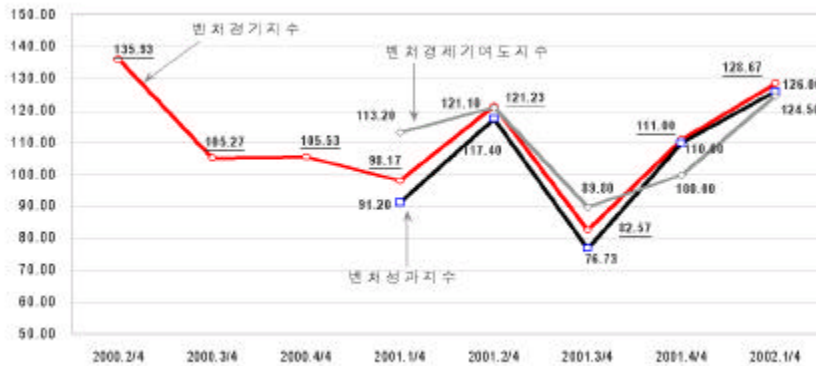


· ( ) , , ,  
 , 가  
- ( ) 가 ,  
**R&D** / , 가  
· , 가 1  
가 가 , R&D ,  
1  
· ,  
 , , ,  
- ( ) 가 2001 3/4  
 , 가  
 ,  
· 4/4 3/4  
 ,  
· 2002 가 ,  
 ,  
· 가  
가  
 , 가  
가  
· , 가 가 ,  
 ,

# 2002. 1/4

‘HRI’ \*

- (2001 4/4 가) . 가  
 110 , 가  
 - 2001 ,  
 , 2001 3/4 82.57, 76.73  
 , 2001 4/4 ( 99.10)  
 , 4/4 가 111.00  
 가 3/4



1) 가 . : / / , : /  
 2) 2001 4/4 , 2002 1/4

- (2002 1/4 ) ,  
 1/4 가  
 - 2002 1/4 128.67 2001 4/4 111.00

\*) ‘HRI-’ , . 3 ,  
 ( : 2001 12 17 21 , : 100 , ,  
 : 95% ± 8.0%P). (( - ) / +1}  
 × 100)가 100 가 ,

-----

· 126.00(2001 4/4 110.00),  
 124.50(2001 4/4 100.00) 100  
 · , 2002 1/4  
 40%가 , ,

< 2002 1/4 >

( 40%)	( 5%)
가	가

- ( ) 20 2001 4/4  
 가 , 1/4  
 · 20 2001 4/4 가 94.43 20  
 110~120 ,

· 2001 4/4 20 110  
 , 20  
 98.60 , 가

< >

	01/14	01/24	01/34	01/44	02/14	01/14	01/24	01/34	01/44	02/14	01/14	01/24	01/34	01/44	02/14
	98.17	121.23	82.57	111.00	128.67	91.20	117.40	76.73	110.00	126.00	113.20	121.10	89.80	100.00	124.50
20	90.73	121.40	71.67	94.43	143.07	94.47	114.23	73.33	98.60	131.97	100.00	119.65	85.00	91.65	135.45
20 50	102.93	122.57	85.97	110.80	119.80	91.10	125.27	83.33	108.10	119.80	117.75	120.20	86.85	97.30	114.85
50	96.43	119.33	84.47	121.40	128.20	90.07	109.33	72.60	118.83	128.20	113.80	123.00	94.45	107.70	126.90

: 2001 4/4 , 2002 1/4

-----

· , 2002 1/4 ,  
 20 ,  
 가  
 · , , 2001 4/4  
 - ( ) · 2001 4/4 ,  
 가 , 2002 1/4  
 · 2001 3/4 가 4/4  
 111.10 ,  
 가 3/4 76.20 4/4 133.30 . 2002  
 1/4  
 · S/W · 4/4 ,  
 가 . 2002 1/4 ,  
 가  
 · 3/4 , 가가 · PC , 4/4  
 , , , , . 2002  
 1/4  
 · 3/4 , , . .  
 4/4 , , , ,  
 2002 1/4

< >

	0124	0134	0144	02.14	0124	0134	0144	02.14	0124	0134	0144	02.14
	1213	8257	1100	12867	128.13	9453	12133	12267	121.10	8980	10000	12450
	127.77	8093	111.10	140.77	111.07	7620	133.30	137.07	120.85	7855	8890	116.65
SW·	124.83	85.00	111.13	127.77	126.70	108.33	123.63	120.83	127.15	85.00	100.00	116.65
·	121.83	86.93	127.80	140.73	132.03	86.97	137.07	135.17	107.75	93.50	108.35	144.45
·PC ·	79.67	44.43	104.77	104.77	90.83	60.00	116.67	102.37	99.95	66.65	92.85	103.55
· ·	148.53	103.03	121.23	115.17	163.60	115.17	127.30	109.10	141.00	104.55	104.55	118.20
	127.20	90.13	97.23	136.10	139.53	106.17	102.80	127.77	128.85	100.00	100.00	135.45

:

-----

- ( ) 5 44 ,  
 가 가 , 2002 1/4

· 4/4 5 , ,  
 가 80~90 .  
 2002 가  
 · 4/4 5 2002 1/4

< >

	01.14	01.24	01.34	01.44	02.14	01.14	01.24	01.34	01.44	02.14	01.14	01.24	01.34	01.44	02.14
	98.17	121.23	82.57	111.00	128.67	91.20	117.40	76.73	110.00	126.00	113.20	121.10	89.80	100.00	124.50
5	111.10	127.60	78.17	91.37	125.90	112.67	118.43	67.80	93.83	125.90	116.70	120.70	81.05	83.35	122.20
10	96.77	118.87	82.33	122.63	134.50	78.87	115.27	84.40	117.83	127.37	111.00	122.75	89.10	110.70	130.35
11	93.77	120.03	85.73	115.57	126.67	92.40	118.43	77.00	114.83	125.20	113.55	119.95	96.40	103.35	122.25

:

- ( ) 4/4 on-off line 가 , 4/4  
 가 on-line 1/4 가  
 · on-line 4/4 , 가  
 가 , 2002

< >

	01.14	01.24	01.34	01.44	02.14	01.14	01.24	01.34	01.44	02.14	01.14	01.24	01.34	01.44	02.14
	98.17	121.23	82.57	111.00	128.67	91.20	117.40	76.73	110.00	126.00	113.20	121.10	89.80	100.00	124.50
on-line	104.20	147.87	88.90	98.13	133.37	97.93	142.03	85.73	103.70	136.53	125.05	128.25	92.85	77.80	125.00
off-line	91.80	120.90	77.23	114.63	118.90	86.67	116.73	72.50	108.20	117.70	112.30	127.50	85.70	101.75	119.30
on-off line	109.20	105.03	93.00	117.53	136.97	97.70	102.07	80.70	115.80	124.20	108.65	106.10	100.00	121.05	134.20

:

-----

---



---

· ,

· ,

· 60.8%가 ' , ' , ,

· ( ' ) ,

· ,

· , ( 55.6%),

· (38.9%) ,

· PC (50.0%),

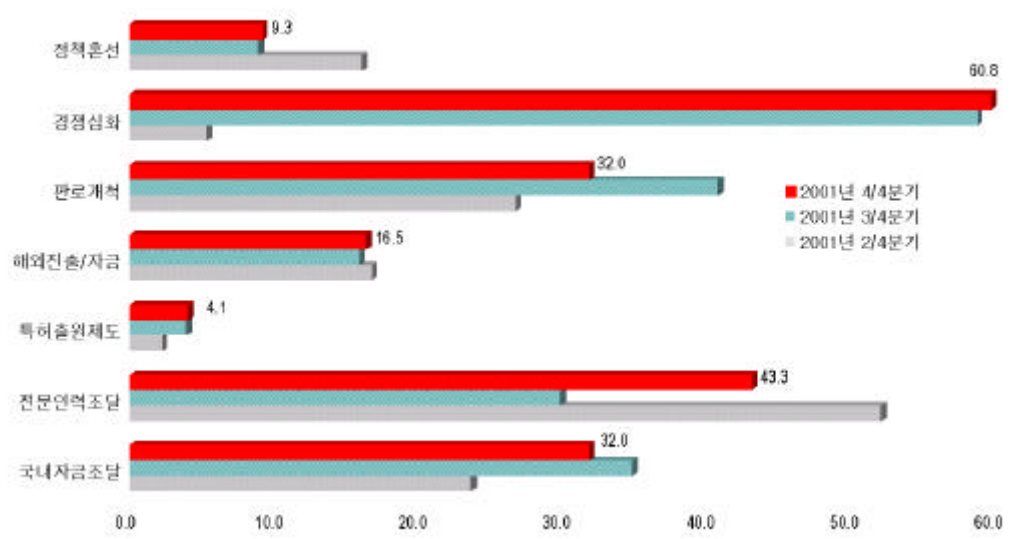
· (63.6%)가

· (33.3%), (22.7%)

· S/ W (39.1%), PC(35.7%),

· (45.5%)가

< (2 , %) >



-----

- ,  
· , , , 19.4%가  
· , , CB 6% , ,  
· (14.3%) 가  
· 7.9% , , ,  
· (25.8%), (9.7%)  
· (22.0%), 가 (11.9%) (23.7%),

- , 가 , R&D/  
/ , 가  
· 20 가  
· 5가 1 , 18.7% R&D 31.9%가 , 7.7%  
· 1

- 가가 , R&D/  
· 5 , 가 61.5%  
· 가 R&D/ 가 45%  
· , , 20% , ,  
· , , 10% , ,

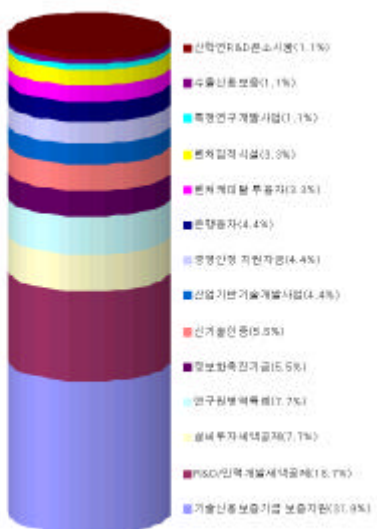




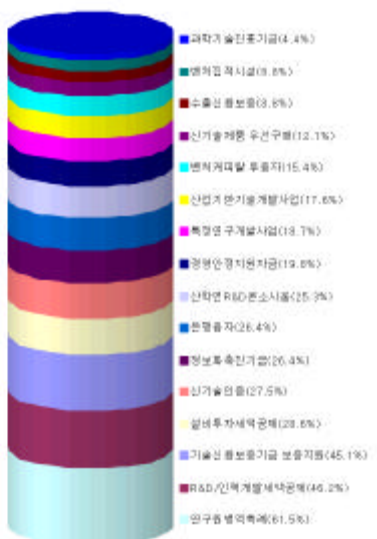
<

>

1순위 응답률(%)



전체 응답률(5개 응답률 합산, %)



가 2001 3/4

2001 3/4

가 4/4

, 4/4

3/4

가

---

---

---

· , 2002 가  
,  
,

- , 가 ,  
가  
,

· 가 , R&D/  
/ , 가

가  
· 가 가 , ,

< >

---

---

· ·  
· ·  
· ·  
· 가 가 ·

---

