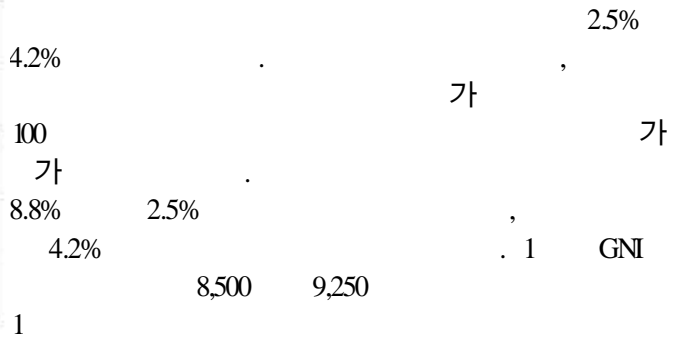
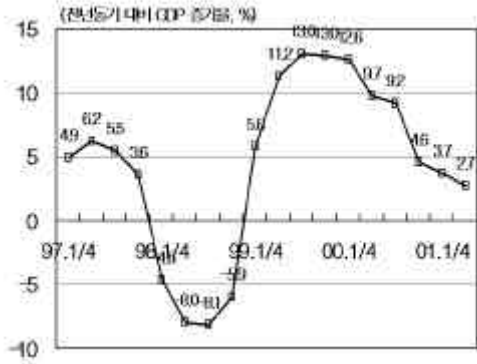


經濟 指標

- ✦ 國內總生產 1人當 GNI
 - ✦ 產業 活動
 - ✦ 國內 金融 指標
 - ✦ 國際 金融 指標
 - ✦ 僱傭
 - ✦ 對外 去來
 - ✦ 物價
 - ✦ 2002年 巨視 經濟 展望
-

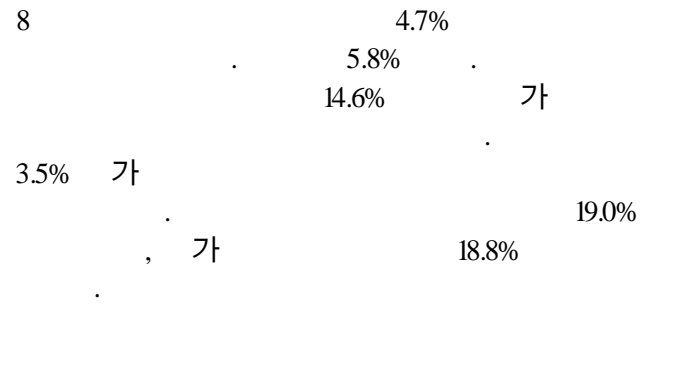
國內總生産 1人當 GNI



		1996	1997	1998	1999	2000	2001(E)	2002(E)	
()		418.5	453.3	444.4	482.7	517.1	530.0	550.0	
		5,200	4,766	3,177	4,058	4,576	4,219	4,300	
1	GNI	11,380	10,307	6,723	8,551	9,628	8,500	9,250	
GDP	, %		6.8	5.0	-6.7	10.9	8.8	2.5	4.2
			7.2	3.2	-10.1	9.4	6.2	3.0	4.0
			9.1	-8.7	-38.8	36.3	34.3	-7.4	4.4
			6.1	2.3	-10.1	-10.3	-4.1	3.2	5.4

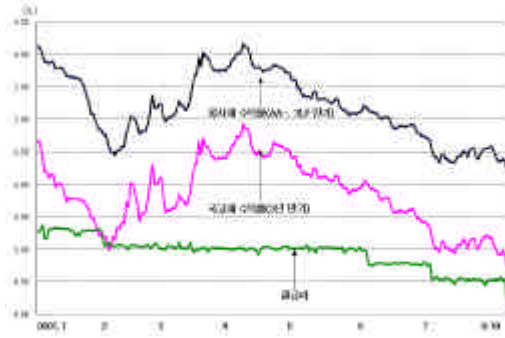
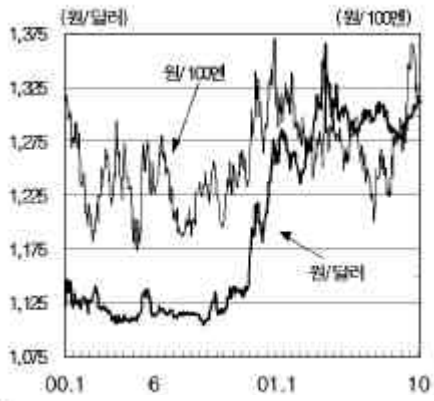
: (E)

産業活動



		1999	2000				2001						
			Q1	Q2	Q3	Q4	Q1	Q2	6	7	8		
가	()		24.2	23.6	18.4	19.8	7.6	16.8	5.0	1.7	-2.8	-5.7	-4.7
			13.0	15.1	13.3	8.0	3.9	9.8	2.5	4.3	4.5	2.9	3.5
			30.9	15.6	8.0	7.0	17.3	11.7	3.7	-2.8	0.7	-11.8	-8.9
			0.8	70.9	15.9	7.9	-7.0	15.1	-25.3	1.7	-8.3	11.9	-18.8
가	()	76.5	79.4	78.8	79.9	75.0	78.3	74.7	74.6	74.1	71.0	73.4	
()	(, %)	0.33	0.23	0.17	0.28	0.37	0.26	0.32	0.23	0.21	0.24	0.25	

國內金融指標



1,120 10 / (NDF)

1,310 . 8 ,

가

. 10 / 9

가 ,

가

가

가

가

가

가

가

가

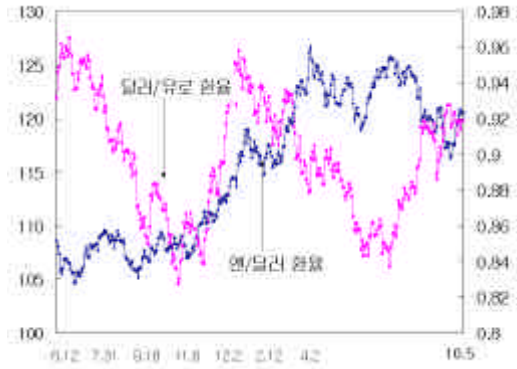
가

		1999	2000				2001			
			Q1	Q2	Q3	Q4	Q1	Q2	Q3	10.5
가 (%)	M2	12.1	23.2	22.3	21.6	14.26	11.40	9.60	-	-
	(1)	4.84	5.11	5.16	5.03	6.01	5.01	5.04	3.97	4.02
(%)	CP (91)	7.85	7.28	7.61	7.40	7.13	5.97	5.62	4.62	4.53
	(3)	9.95	10.01	9.41	9.04	8.13	7.67	7.10	5.95	5.91
	/	1,138.0	1,108.3	1,114.9	1,115.0	1,265.0	1,327.5	1,297.5	1,309.6	1,312.2
가		1,028.1	860.94	821.22	613.22	504.62	523.22	595.13	479.68	501.92

: 1) 가

2) , 가

國際 金融 指標

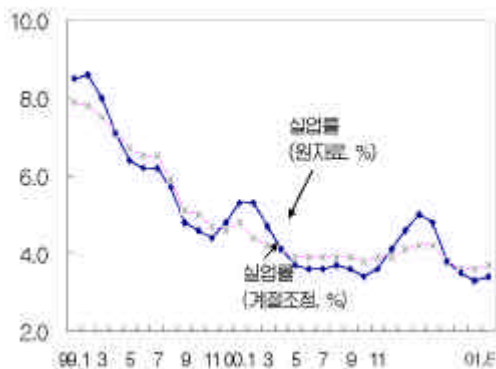


가 / , 120
가 120
가

(: p, %, , ,)

		1999	2000	2001			
				Q1	Q2	Q3	10.5
Dow Jones	가	11,497.1	10,786.9	9,878.78	10,502.4	8,847.56	9,119.77
(%)	(10)	6.45	5.12	4.88	5.40	4.59	4.51
	(30)	6.49	5.46	5.45	5.75	5.42	5.32
	LIBOR(3)	4.880	6.53	5.19	3.86	3.08	2.45
	(10)	6.00125	6.40	4.87	3.84	2.59	2.48
	(10)	1.65	1.63	1.28	1.19	1.41	1.39
/		102.23	114.41	126.18	124.72	119.42	120.51
/		1.0098	0.9422	0.8782	0.8502	0.9108	0.9187
/100		1,121.84	1,093.16	1,064.27	1,043.51	1,090.98	1,090.83

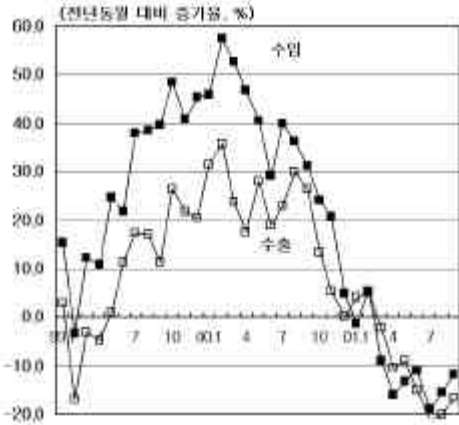
雇傭



2001 8 7 8,000 75
2,000
7 3.4%가 (3.6%
0.1%p). 23 6,000
8 가
(10
) 3.1%
22.7%
. OECD 3.6%.

	2000					2001					2002(E)
	Q1	Q2	Q3	Q4		Q1	Q2	7	8	(E)	
(%)	5.1	3.8	3.6	3.7	4.1	4.8	3.5	3.4	3.4	3.8	3.1
()	1,092	840	809	817	889	1,029	791	760	752	886	742
()	20,313	21,268	21,395	21,266	21,061	20,401	21,677	21,760	21,524	21,635	23,202

對外 去來

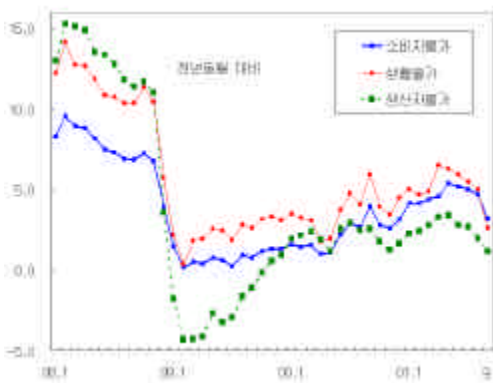


9 , 126.2 16.6%
 , 7 (21.0%) 8 (20.1%)
 , 117.4
 11.7% , 8.9
 , 7 (3.3) , 8 (4.6)
 . 10
 가 , 10 ()
 9)

(: 億)

	1997	1998	1999	2000	2001.	8	9
	1,361.6	1,332.2	1,436.9	1,722.7	785.7	118.1	126.2
	1,446.2	933.4	1,197.5	1,604.9	725.3	113.6	117.4
	- 81.7	405.6	250.0	110.4	68.0	- 1.1	-
	- 31.8	416.3	287.2	166.0	86.1	7.2	-
	- 32.0	6.3	- 10.1	- 39.7	- 13.3	- 7.6	-
	- 24.5	- 50.5	- 46.6	- 22.0	- 4.9	1.1	-
	6.7	33.5	19.5	6.2	0.2	- 1.8	-
가	13.1	- 39.9	5.8	117.3	- 73.6	13.9	-
가	88.7	485.1	740.5	962.0	942.6	990.3	1,000.8

物價



9 가
 5 3.2%
 5.4%
 가 가
 가 가
 가 가
 2.6%
 가 가
 가 가

	2000						2001			2001(E)	2002(E)		
	7	8	9	10	11	12	Q1	Q2	7			8	9
가	2.9	2.7	3.9	2.8	2.6	2.3	4.2	5.3	5.0	4.7	3.2	4.3	4.1
가	2.9	2.5	2.5	1.8	1.3	2.0	2.5	3.2	2.7	2.0	1.2	-	-
가	4.8	4.1	5.9	3.9	3.5	3.6	4.8	6.2	5.5	5.0	2.6	-	-
WTI 가(\$/bbl,)	27.4	33.1	30.8	32.7	33.8	26.8	28.6	27.4	26.4	27.2	23.4	-	-

2002 巨視 經濟 展望					
		1999	2000	2001(e)	2002(e)
	(%)	10.9	8.8	2.5	4.2
	1 GNI()	8,551	9,628	8,700	9,250
	(%)	9.1	6.2	3.0	4.0
	(%)	10.6	7.1	3.1	4.3
	(%)	3.7	11.0	-2.4	4.9
	(%)	- 10.3	-4.1	3.2	5.4
	(%)	36.3	34.3	-7.4	4.4
	()	245	110	95	105
	()	239	118	107	112
	()	1,437	1,723	1,627	1,752
	가 (%)	(8.6)	(19.9)	(-5.5)	(7.7)
	()	1,198	1,605	1,520	1,640
	가 (%)	(28.4)	(34.0)	(-5.3)	(7.9)
가	가(, %)	0.8	2.3	4.3	4.1
	(, %)	9.0	6.7	5.7	6.0
	/ (,)	1,189	1,130	1,290	1,250
(, %)		6.3	4.1	3.8	3.1