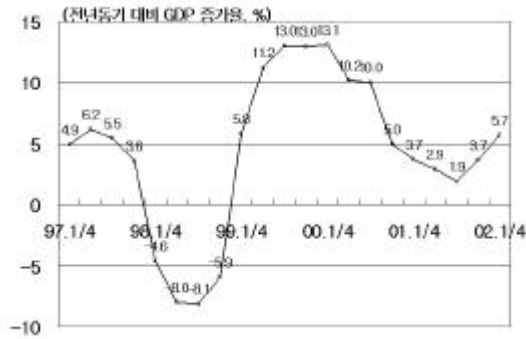


國內總生產 1人當 GNI



2001 3.0%  
 2002 가 , 가  
 가 가 ,  
 가 , 1 GNI 2002  
 9,250 2001 1

		1996	1997	1998	1999	2000	2001	2002(E)	
( )		418.5	453.3	444.4	482.7	522.0	545.0	596.0	
		5,200	4,766	3,177	4,058	4,617	4,222	4,600	
1	GNI	11,380	10,307	6,744	8,595	9,770	8,900	9,250	
	, %	GDP	6.8	5.0	-6.7	10.9	9.3	3.0	5.3
			7.2	3.2	-10.1	9.4	6.7	3.7	4.5
			9.1	-8.7	-38.8	36.3	35.3	-9.8	7.9
			6.1	2.3	-10.1	-10.3	-4.1	5.8	5.7

: (E)

産業活動

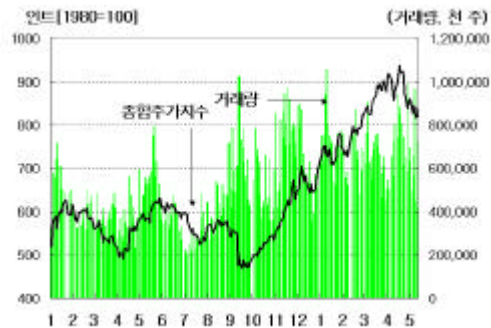
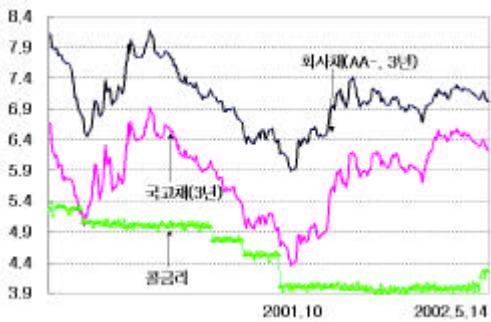


3  
 4.4% 가.  
 8.2% 가  
 19% 가  
 168.6% 가.  
 가  
 77.3%  
 11.4%

		1999	2000	2001				2002			
				Q1	Q2	Q3	Q4	1	2	3	
		24.2	16.8	5.0	1.7	-1.8	2.3	1.8	10.0	-2.7	4.4
		13.0	9.8	2.5	4.4	4.9	6.5	4.6	7.3	8.1	8.2
		30.9	11.7	3.7	-2.8	-5.7	-7.1	-1.0	27.9	14.5	48.4
	(%)	0.8	15.1	-25.3	1.7	17.0	60.1	14.4	39.5	41.9	168.6
가	(%)	76.5	78.3	74.7	74.6	72.2	72.4	73.2	76.6	76.3	77.3
	(, %)	0.33	0.26	0.32	0.23	0.11	0.15	0.23	0.06	0.09	0.11

:

國內 金融 指標

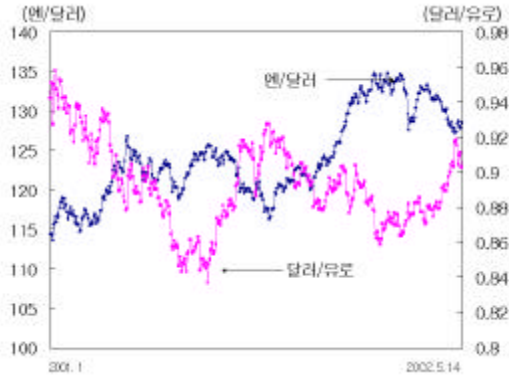


가 ,  
가 4  
가 , 5 22 1,240 , /100  
1,000 /  
, , 1,240 1,250  
美  
가  
가 , 가 가  
가  
美 , 가 가 가  
가 가  
가 . UBS  
810 820  
가美  
, 가 가 가

		2000	2001				2002				
			Q1	Q2	Q3	Q4	1	2	3	4	5.14
가 (%)		20.0	11.40	9.60	7.2	14.0	7.1	20.3	17.6	17.0	-
	M2	30.3	18.20	12.50	12.40	13.4	12.6	14.7	16.2p	15.4p	-
(% )	( 1 )	6.01	5.01	5.04	3.97	4.01	3.97	3.94	3.99	4.04	4.26
	CP (91 )	7.13	5.97	5.62	4.62	5.01	4.80	4.60	4.98	4.86	4.94
	( 3 )	8.13	7.67	7.10	5.95	7.04	6.97	6.68	7.07	7.11	7.02
/		1,265.0	1,327.5	1,297.5	1,309.6	1,312.9	1,314.4	1,323.8	1,325.9	1,293.7	1,279.3
가		504.62	523.22	595.13	479.68	693.70	748.07	819.99	895.58	842.34	837.37

: 1) 가 . 2) , 가

國際 金融 指標

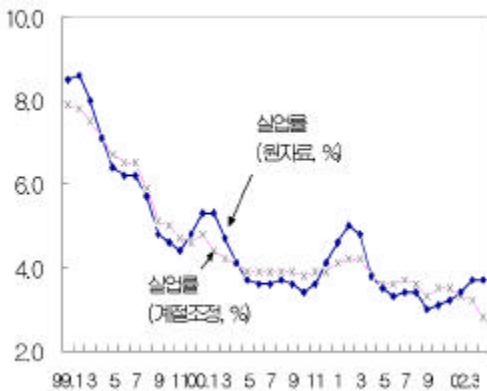


가

( : p, %, , , )

		2000	2001				2002	
			Q1	Q2	Q3	Q4	Q1	5.14
Dow Jones	가	10,786.9	9,878.78	10,502.4	8,847.56	10,021.5	10,403.94	10,298.24
(%)	(10 )	5.12	4.88	5.40	5.03	5.03	5.40	5.31
	(30 )	5.46	5.45	5.75	5.42	5.47	5.80	5.76
	LIBOR(3 )	6.53	5.19	3.86	3.08	1.54	1.69	1.75
	(10 )	6.40	4.87	3.84	2.59	1.88	2.03	1.90
/		1.63	1.28	1.19	1.41	1.37	1.40	1.37
/		114.41	126.18	124.72	119.42	131.64	132.78	128.54
/		0.9422	0.8782	0.8502	0.9108	0.8896	0.8716	0.9027
/100		1,093.16	1,064.27	1,043.51	1,090.98	1,000.0	999.40	997.89

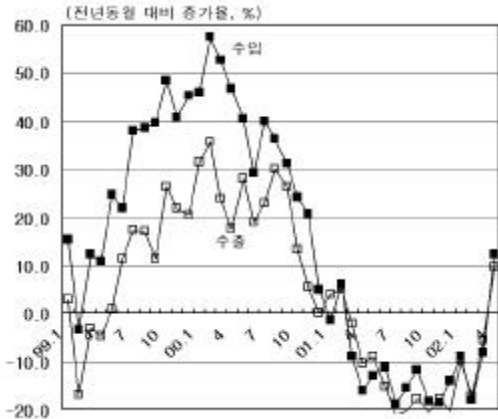
雇傭



3 3,000 (-4.1%)  
 26 6,000 (-25.7%)  
 3.4%  
 0.1% 2.9% 20 30 50  
 , 10  
 1.4%  
 가  
 42 4,000 (2.0%) 가.  
 3,000 8 9,000 . OECD  
 -0.3%p 3.7%

		2000	2001					2002			2002(E)	
			Q1	Q2	Q3	Q4	12	1	2	3		
(%)		4.1	4.8	3.5	3.3	3.0	3.4	3.7	3.7	3.7	3.4	3.3
( )		889	1,029	791	755	725	762	819	819	802	769	770
( )		2,1061	20,401	21,677	21,697	21,673	21,347	21,362	21,025	21,099	21,523	22,563

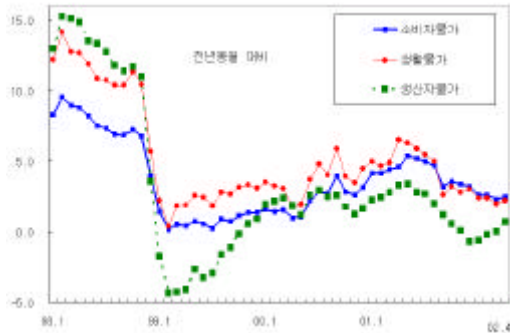
對外 去來



수출 125.7, 수입 132.9, 2001년 4분기 9.7%, 2002년 1분기 12.1%, 2002년 2분기 14.1%, 2002년 3분기 14.1%, 2002년 4분기 14.1%

		1999	2000	2001	2002. 1	2	3	4	2002(E)
	가	1,436.9	1,722.7	1,504.4	114.0	110.4	133.3	132.9	1,640
	가	1,197.5	1,604.9	1,411.0	113.3	104.6	119.1	125.7	1,561
	가	250.0	110.4	86.2	2.8	3.8	10.9	-	80
	가	287.2	166.0	133.9	6.6	6.6	20.0	-	-
	가	-10.1	-39.7	-35.3	-5.5	-4.7	-4.1	-	-
	가	-46.6	-22.0	-8.9	1.9	2.4	-4.6	-	-
	가	19.5	6.2	-3.6	-0.1	-0.5	-0.4	-	-
	가	5.8	117.3	-35.8	19.4	-5.5	-4.7	-	-
	가	740.5	962.0	1,028.2	1,043.0	1,050.9	1,060.9	1,076.6	-

物價



소비자물가 0.6%, 생산물가 0.7%, 경상물가 2.5%, 2001년 4분기 2.2%

		2000	2001				2002			2002(E)	
			Q1	Q2	Q3	Q4	Q1	3	4		
가	( )	2.3	3.6	5.0	4.2	3.4	4.1	2.5	2.3	2.5	4.0
가	( )	2.0	2.5	3.1	2.0	0.0	1.9	-0.2	0.0	0.7	-
가	(%)	3.7	5.1	6.8	5.3	3.4	5.1	2.2	2.4	2.0	-
WTI	가(\$/bbl, )	26.8	28.6	27.4	23.4	20.4	20.4	26.3	26.3	27.3	-

2002 巨視 經濟 展望					
		1999	2000	2001(e)	2002(e)
	(%)	10.9	8.8	3.0	5.3
	1 GNI( )	8,551	9,628	8,900	9,250
	(%)	9.4	6.7	3.7	4.5
	(%)	11.0	7.9	4.2	4.7
	(%)	3.7	11.4	- 1.7	6.5
	(%)	- 10.3	-4.1	5.8	5.7
	(%)	36.3	35.3	-9.8	7.9
	( )	245	110	86	80
	( )	239	118	95	79
	( )	1,437	1,723	1,504	1,640
	가 (%)	(8.6)	(19.9)	(- 12.7)	(9.0)
	( )	1,198	1,605	1,411	1,561
	가 (%)	(28.4)	(34.0)	(- 12.1)	(10.6)
가	가( , %)	0.8	2.3	4.3	4.0
	( , %)	9.0	6.7	5.7	7.2
	/ ( , )	1,189	1,130	1,291	1,275 1,285
( , %)		6.3	4.1	3.7	3.3