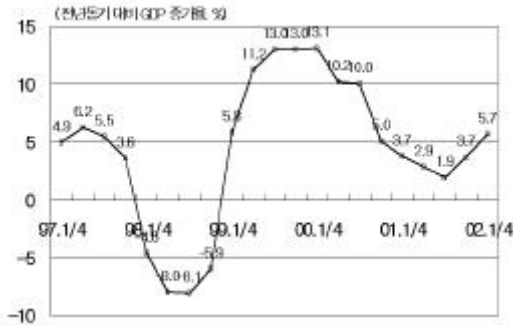


經濟 指標

- ✦ 國內總生產 1人當 GNI
 - ✦ 產業 活動
 - ✦ 國內 金融 指標
 - ✦ 國際 金融 指標
 - ✦ 雇傭
 - ✦ 對外 去來
 - ✦ 物價
 - ✦ 2002年 巨視 經濟 展望
 - ✦ 2002年 主要 產業 修正 展望
-

國內總生産 1人當 GNI



2001

가 . 2002 2002 9,500 6.2% , 1 GNI 2001

		1996	1997	1998	1999	2000	2001	2002(E)	
()		418.5	453.3	444.4	482.7	522.0	545.0	599.0	
		5,200	4,766	3,177	4,058	4,617	4,222	4,773	
1 人當 GNI		11,380	10,307	6,744	8,595	9,770	8,900	9,500	
GDP	, %		6.8	5.0	-6.7	10.9	9.3	3.0	6.2
			7.2	3.2	-10.1	9.4	6.7	3.7	6.5
			9.1	-8.7	-38.8	36.3	35.3	-9.8	6.9
			6.1	2.3	-10.1	-10.3	-4.1	5.8	7.4

: (E)

産業活動



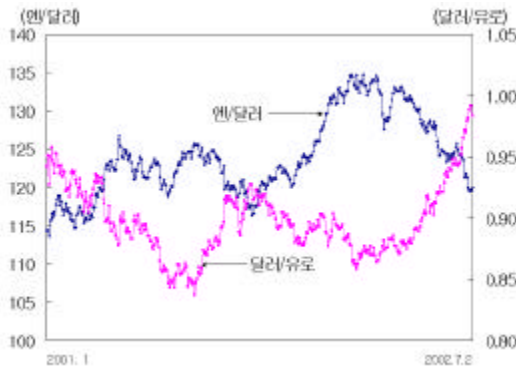
5

7.7% 가 . 가 . 가 5.1%
 가 , 가 . 가 가
 2.6% 가 . 가 76.5% 3 4
 13.7%

		1999	2000	2001				2002		
				Q1	Q2	Q3	Q4	Q1	4	5
가 (%)		24.2	16.8	5.0	1.7	-1.8	2.3	1.8	3.9	7.4
		13.0	9.8	2.5	4.4	4.9	6.5	4.6	8.0	7.8
		30.9	11.7	3.7	-2.8	-5.7	-7.1	-1.0	33.3	21.9
		0.8	15.1	-25.3	1.7	17.0	60.1	14.4	85.6	31.3
가 (%)		76.5	78.3	74.7	74.6	72.2	72.4	73.2	76.8	77.7
(, %)		0.33	0.26	0.33	0.23	0.20	0.17	0.23	0.08	0.08

:

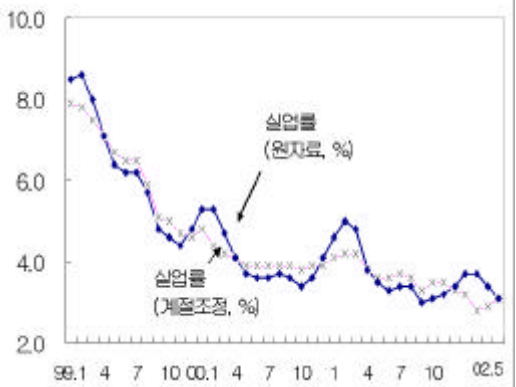
國際金融指標



가 , II
 가 가
 美 가 가
 가 ,
 가
 (: p, % , ,)

	2000	2001				2002					
		Q1	Q2	Q3	Q4	Q1	4	5	6	7.2	
Dow Jones 가	10,786.9	9,878.78	10,502.4	8,847.56	10,021.5	10,403.94	9946.22	9925.25	9243.26	9007.75	
(%)	(10)	5.12	4.88	5.40	5.03	5.03	5.40	5.09	5.05	4.81	4.73
	(30)	5.46	5.45	5.75	5.42	5.47	5.80	5.59	5.62	5.51	5.44
		6.53	5.19	3.86	3.08	1.54	1.69	1.81	1.80	1.81	1.83
	LIBOR3)	6.40	4.87	3.84	2.59	1.88	2.03	1.92	1.90	1.86	1.86
	(10)	1.63	1.28	1.19	1.41	1.37	1.40	1.38	1.39	1.32	1.33
/	114.41	126.18	124.72	119.42	131.64	132.78	128.59	124.26	119.59	119.87	
/	0.9422	0.8782	0.8502	0.9108	0.8896	0.8716	0.9000	0.9337	0.9916	0.9856	
/100	1,093.16	1,064.27	1,043.51	1,090.98	1,009.40	999.40	1008.31	998.50	1007.57	1003.84	

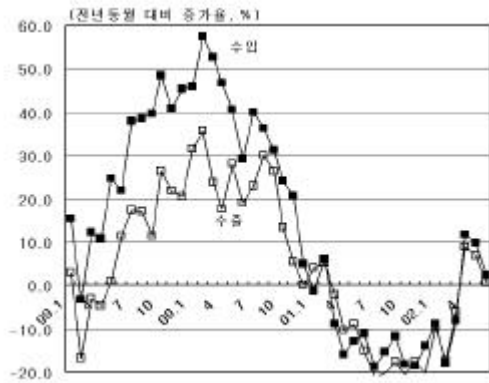
雇傭



5 4 6,000 (-6.5%)
 11 6,000 (-15.3%)
 , 2.9%
 , 3.1%) 30 (3
 , 0.0%p)
 가 , 20 , 10
 가 가 16 3,000
 (0.7%) 가 7,000
 6 6,000 . OECD
 -0.2%p 3.1%

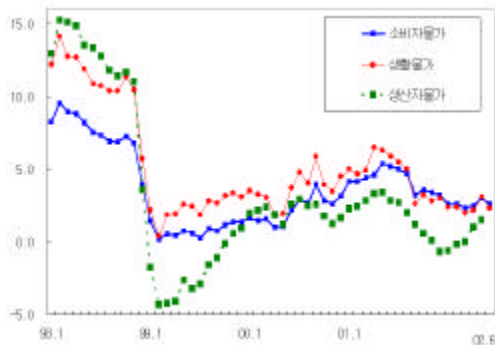
	2000	2001				2002				2002(E)
		Q1	Q2	Q3	Q4	Q1	4	5		
(%)	4.1	4.8	3.5	3.3	3.0	3.7	3.6	3.1	2.9	3.1
()	889	1,029	791	755	725	819	797	707	661	770
()	2,1061	20,401	21,677	21,697	21,673	21,362	21,216	22,060	22,223	22,563

對外 去來



1999	2000	2001	2002. Q1	4	5	6	2002(E)	
1,436.9	1,722.7	1,504.4	356.9	132.0	142.2	130.0	1,640	
1,197.5	1,604.9	1,411.0	336.9	125.4	126.9	119.7	1,561	
244.8	122.4	86.2	17.1	-0.1	10.5	-	80	
283.7	168.7	133.9	32.7	11.3	15.3	-	-	
-6.5	-28.9	-35.3	-14.3	-3.6	-5.6	-	-	
-51.6	-24.2	-8.9	-0.2	-7.4	1.8	-	-	
19.2	6.8	-3.6	-1.0	-0.5	-1.0	-	-	
20.4	121.1	-35.8	9.1	1.4	-8.8	-	-	
가	740.5	962.0	1,028.2	1,060.9	1,076.6	1,096.3	1,124.4	-

物價



2000	2001	2002	2002(E)
2.3	3.6	3.0	3.5
2.0	2.5	1.5	-
3.7	5.1	3.1	-
26.8	28.6	25.3	-

	2000	2001				2002			2002(E)	
		Q1	Q2	Q3	Q4	Q1	5	6		
가	2.3	3.6	5.0	4.2	3.4	4.1	2.5	3.0	2.6	3.5
가 ()	2.0	2.5	3.1	2.0	0.0	1.9	0.7	1.5	-	-
가 (%)	3.7	5.1	6.8	5.3	3.4	5.1	2.2	3.1	2.3	-
WTI 가(\$/bbl,)	26.8	28.6	27.4	23.4	20.4	20.4	26.3	25.3	26.9	-

		1997	1998	1999	2000	2001(p)	2002(e)
	(%)	5.0	-6.7	10.9	9.3	3.0	6.2
1	GNI(\$)	10,315	6,744	8,595	9,770	8,900	9,500
	(%)	3.2	-10.1	9.4	6.7	3.7	6.5
	(%)	3.5	-11.7	11.0	7.9	4.2	6.7
	(%)	-2.2	-21.2	3.7	11.4	-1.7	7.0
	(%)	2.3	-10.1	-10.3	-4.1	5.8	6.9
	(%)	-8.7	-38.8	36.3	35.3	-9.8	7.4
()	(\$)	-81.7	404	245	122	86	80
	(\$)	-84	390	239	118	95	79
	(\$)	1,362	1,323	1,437	1,723	1,504	1,640
	가 (%)	(5.0)	(-2.8)	(8.6)	(19.9)	(-12.7)	(9.0)
	(\$)	1,446	933	1,198	1,605	1,411	1,561
	가 (%)	(-3.8)	(-35.5)	(28.4)	(34.0)	(-12.1)	(10.6)
	가(, %)	4.4	7.5	0.8	2.3	4.1	3.5
	/\$ (,)	951	1,399	1,190	1,131	1,291	1,250 1,260
	(,)	1,695.0	12,04.0	1,138.0	1,264.5	1,313.5	1,210 1,230
	(%)	2.6	6.8	6.3	4.1	3.7	3.1

2002 (%)						
		2002				
:		-	10 (17.9)	-	23 (6.6)	- 가
		6.8 (15)	6.6 (- 10.4)	21.2 (36.6)	6.9 (-5.4)	- 가
:		8.0 (12)	20.4 (-3.9)	10.0 (-20.8)	16.1 (7.4)	-
:		3.1 (- 1.3)	-4.3 (1.6)	-5.0 (-6.5)	15 (-0.2)	-
		3.7 (12.8)	-	-	-	-
: L		3.0 (- 1.8)	3.6 (6.5)	0.0 (-7.8)	3.5 (2.4)	-
W :		-	13.8 (-43.1)	9.6 (-22.2)	13.7 (-40.5)	- 가

: 1) () 2001 .
2) .