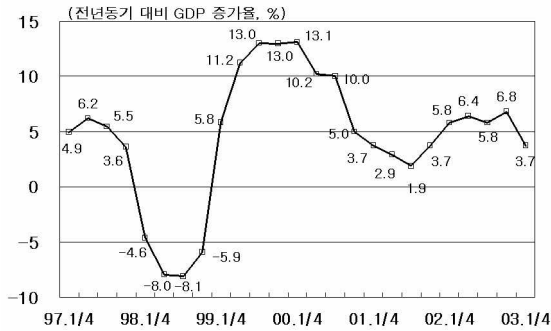


經濟 指標

- ✦ 國內總生產 1人當 GNI
 - ✦ 產業 活動
 - ✦ 國內 金融 指標
 - ✦ 國際 金融 指標
 - ✦ 雇傭
 - ✦ 對外 去來
 - ✦ 物價
 - ✦ 2003年 巨視 經濟 展望
-

國內總生産 1人當 GNI



2003 1/4

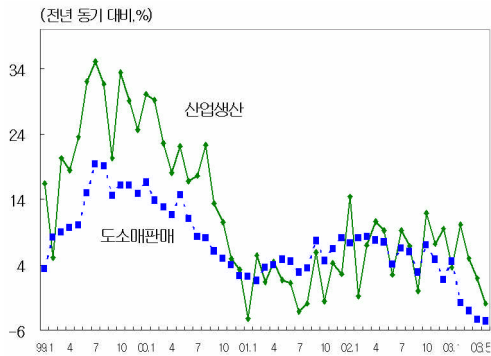
3.7% 가

가

		1998	1999	2000	2001	2002(P)	2003 1/4	2003(E)
()		444.4	482.7	522.0	545.0	596.0	147.0	637.0
		3,177	4,058	4,617	4,222	4,878	-	5,220
1	GNI	6,744	8,595	9,770	8,900	10,013	-	-
, %	GDP	-6.7	10.9	9.3	3.0	6.3	3.7	3.5
		-10.1	9.4	6.7	3.7	6.2	12	1.6
		-38.8	36.3	35.3	-9.8	6.8	1.6	2.3
		-10.1	-10.3	-4.1	5.8	3.3	8.1	4.8

: (P) , (E)

産業活動



5

8.9%

4.6%

12%

가
가

19%

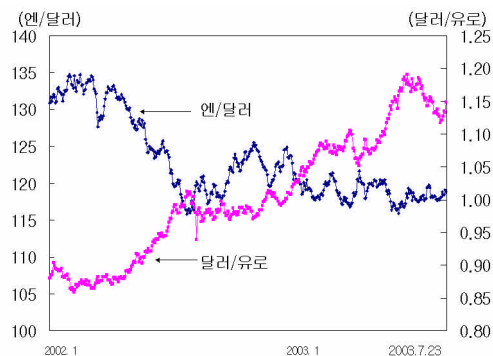
가

11.8%

	2000	2001	2002			2003					
			10	11	12	1	2	3	4	5	
	16.8	13	7.3	11.9	7.2	9.5	3.6	10.2	5.0	1.9	-1.9
	9.8	4.6	6.0	7.0	4.8	1.8	4.5	-1.8	-3.0	-4.3	-4.6
	11.1	-1.1	21.0	30.4	20.9	18.1	14	9.5	-42.6	-1.2	13
가 (%)	15.1	22.1	21.3	19.8	8.0	14.3	20.9	44.0	-36.6	7.8	37.0
가 (%)	78.6	75.1	76.9	77.4	77.1	77.0	77.5	77.9	76.9	76.7	73.9
(, %)	0.26	0.23	0.06	0.05	0.04	0.07	0.04	0.08	0.14	0.08	0.08

: 1) 가 2000 . 2)

國際金融指標

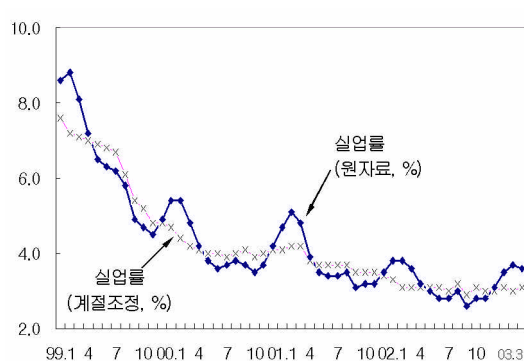


가
가
가
가
가
가
가
가
가
가
가

(: p, %, , ,)

	2001	2002				2003				
		Q1	Q2	Q3	Q4	3	4	5	6.11	7.23
Dow Jones 가	10,021.5	10,403.9	9,243.3	7,591.9	8,341.6	7,992.2	8,480.1	8,850.3	9,183.2	9,194.2
(10)	5.03	5.40	4.81	3.60	3.81	3.80	3.84	3.37	3.21	4.11
(30)	5.47	5.80	5.51	4.68	4.76	4.82	4.76	4.38	4.26	5.04
(%)	154	1.69	1.81	1.78	1.23	1.26	1.27	1.29	1.22	1.00
LIBOR(3)	1.88	2.03	1.86	1.79	1.38	1.28	1.31	1.28	1.14	1.11
(10)	1.37	1.40	1.32	1.19	0.91	0.71	0.62	0.54	0.46	0.97
/	131.64	132.78	119.59	121.70	118.79	117.99	118.98	119.32	117.74	118.84
/	0.8896	0.8716	0.9916	0.9879	1.0494	1.0923	1.1176	1.1783	1.1755	1.1486
/100	1,009.40	999.40	1,007.57	998.37	1,012.87	1,044.65	1,014.00	1,020.94	1,013.54	992.32

雇傭

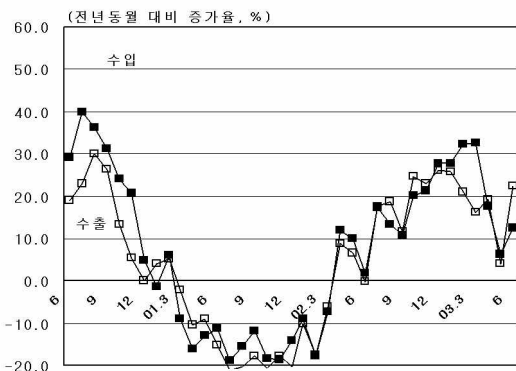


2003 6 가 75 5 , 2 238 3 가 , . 4/4

1 1 (15%) 0.1%p 3.3% 1 3 (0.1%) 13 2 (-0.6%)

	2001	2002				2003					
		Q1	Q2	Q3	Q4	Q1	4	5	6	(E)	
(%)	3.8	3.7	3.0	2.8	2.9	3.1	3.6	3.3	3.2	3.3	3.3
()	845	829	689	652	663	708	806	756	744	755	760
()	21,572	21,511	22,423	22,416	22,326	22,169	21,632	22,156	22,370	22,383	22,100

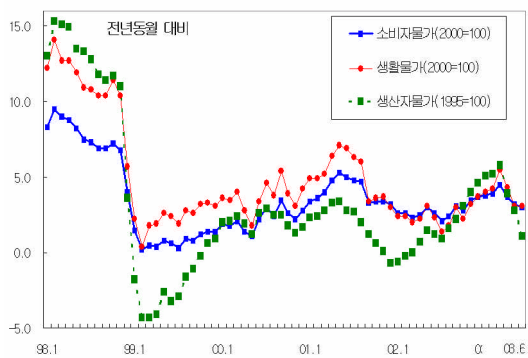
對外 去來



6 157.7 22.3%,
 134.2 12.5% 가 .
 23.5 2000 1 가
 , 33.9
 가
 base effect ,
 가 가
 (: 億)

	2001	2002	2003. 1/4	4	5	6	2003(E)
	1,504.4	1,624.7	430.6	157.4	147.3	157.7	1,833
	1,411.0	1,521.3	442.2	147.8	135.1	134.2	1,770
	82.4	60.9	- 17.2	-3.7	11.8	-	19
	134.9	141.8	12.3	12.7	16.9	-	-
	-38.3	-74.6	-25.7	-3.5	-5.0	-	-
	- 12.0	4.5	3.1	- 12.0	2.3	-	-
	-2.3	- 10.8	-6.8	-0.8	-2.3	-	-
	-32.7	15.2	9.3	-9.1	13.0	-	-
가	1,028.2	1,214.1	1,238.2	1,236.2	1,283.4	1,236.2	-

物價



6 가 ,
 가 0.3% ()
 3.0%) . 4
 , 가 (-0.4%)
 가 (-0.5%)
 가
 가 가
 가 가

	2001	2002	2003						
			1	2	3	4	5	6	(E)
가	4.1	2.7	3.8	3.9	4.5	3.7	3.2	3.0	3.5
가 ()	19	16	5.1	5.2	5.8	3.9	2.8	1.1	-
가 (%)	5.1	2.5	4.0	4.2	5.5	4.3	3.1	3.1	-
WTI 가(\$/bbl,)	20.4	31.2	33.5	36.6	30.2	25.8	29.6	30.2	-

: 가

		1997	1998	1999	2000	2001	2002(p)	2003(e)
	(%)	5.0	-6.7	10.9	9.3	3.1	6.3	3.5
	(%)	3.2	-10.1	9.4	6.7	4.2	6.2	1.6
	(%)	3.5	-11.7	11.0	7.9	4.7	6.8	1.5
	(%)	-2.2	-21.2	3.7	11.4	-1.8	4.8	3.5
	(%)	2.3	-10.1	-10.3	-4.1	5.3	3.3	4.8
	(%)	-8.7	-38.8	36.3	35.3	-9.6	6.8	2.3
()	(\$)	-82	404	245	122	82	61	19
	(\$)	-84	390	239	118	93	103	73
	(\$)	1,362	1,323	1,437	1,723	1,504	1,625	1,833
	가 (%)	(5.0)	(-2.8)	(8.6)	(19.9)	(-12.7)	(8.0)	(12.8)
	(\$)	1,446	933	1,198	1,605	1,411	1,521	1,770
	가 (%)	(-3.8)	(-35.5)	(28.4)	(34.0)	(-12.1)	(7.8)	(16.3)
	가(,%)	4.4	7.5	0.8	2.3	4.1	2.7	3.5
	/ \$ (,)	951	1,399	1,190	1,131	1,291	1,250	1,180 1,190
	(,)	1,695.0	1,204.0	1,138.0	1,264.5	1,313.5	1,186.2	
	(%)	2.6	7.0	6.3	4.1	3.8	3.1	3.3