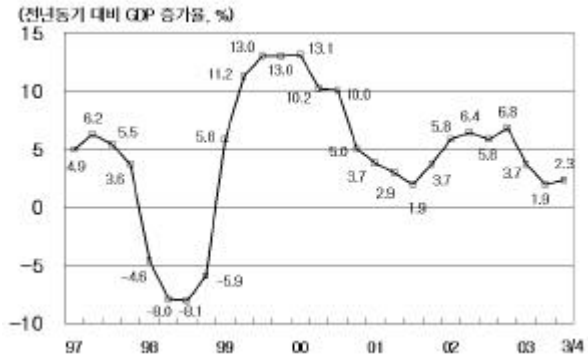


經濟 指標

- ✦ 國內總生產 1人當 GNI
 - ✦ 產業 活動
 - ✦ 國內 金融 指標
 - ✦ 國際 金融 指標
 - ✦ 僱傭
 - ✦ 對外 去來
 - ✦ 物價
 - ✦ 2004年 巨視 經濟 展望
-

國內總生産 1人當 GNI

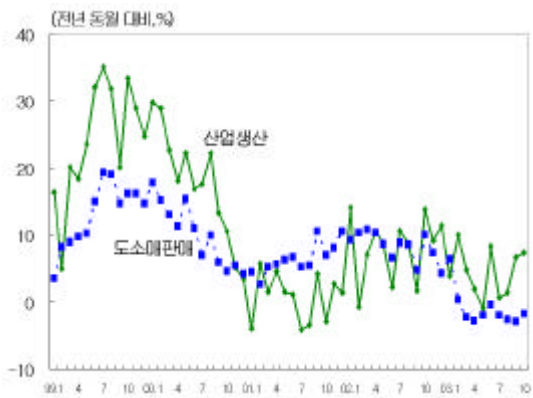


2003 3/4 가 , 2.3% ,
 2/4 1.9% ,
 가 ,

		2000	2001	2002(P)	2003 1/4	2/4	3/4	2003(E)	2004(E)
()		522.0	551.6	596.4	146.8	153.0	153.8	645.9	694.3
		4,617	4,222	4,878	-	-	-	5,497	6,312
1	GNI	9,770	8,900	10,013	-	-	-	-	-
	, %				3.7	1.9	2.3	2.8	4.5
					1.2	-1.4	-1.4	1.2	4.0
					1.6	-0.8	-4.7	2.3	4.7
					8.1	7.2	7.8	5.6	2.8

: (P) , (E)

産業活動

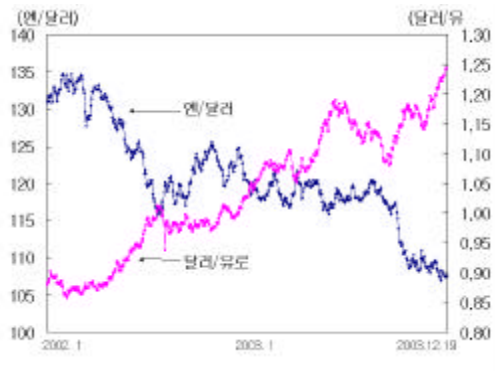


10 가 가 7.4% , 9
 가 가 , -3.8%
 가
 -1.7% 가
 18.8% 16.9% 가
 가 가

		2000	2001	2002	2003					
					1/4	2/4	3/4	8	9	10
	(%)				6.1	3.0	3.0	1.5	6.7	7.4
					1.5	-1.7	-2.5	-2.6	-2.9	-1.7
					-18.2	-4.8	-8.3	-23.8	17.3	4.0
					-2.0	56.3	52.3	44.2	38.3	18.8
가	(%)	78.6	75.3	78.3	78.6	77.2	76.4	76.5	78.8	81.1
(, %)		0.26	0.23	0.06	0.09	0.09	0.08	0.09	0.08	0.06

: 1) 가 2000 . 2)

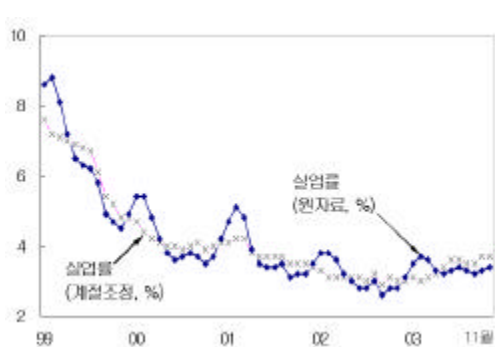
國際 金融 指標



5%
가
, 가 가
가
(: p, %, ,)

	2002				2003				
	Q1	Q2	Q3	Q4	Q1	Q2	Q3	11.25	12.19
Dow Jones 가	10,403.9	9243.3	7591.9	8341.6	7992.2	8,985.4	9,380.2	9,763.9	10,278.2
(10)	5.40	4.81	3.60	3.81	3.80	3.52	4.08	4.19	4.13
(30)	5.80	5.51	4.68	4.76	4.82	4.56	5.01	5.03	4.96
(%) LIBOR(3)	1.69	1.81	1.78	1.23	1.26	1.08	1.03	0.98	0.99
(10)	2.03	1.86	1.79	1.38	1.28	1.12	1.16	1.17	1.17
/	1.40	1.32	1.19	0.91	0.71	0.85	1.44	1.32	1.34
/	132.78	119.59	121.70	118.79	117.99	119.77	110.78	109.39	107.47
/	0.8716	0.9916	0.9879	1.0494	1.0923	1.1508	1.1595	1.1783	1.2432
/100	999.40	1,007.57	998.37	1,012.87	1,044.65	996.41	1,031.51	1,099.75	1,105.07

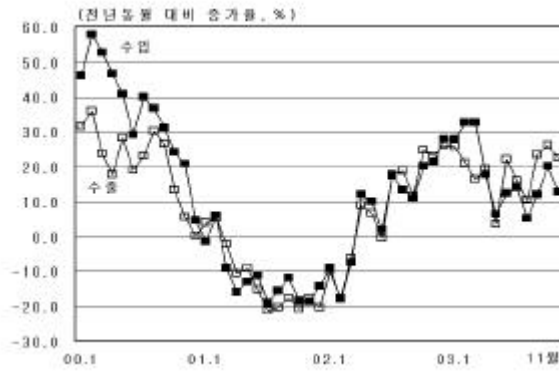
雇傭



11 10 0.1%p 3.4%,
10 2 7,000 (3.5%) 가 79 2,000
(02 11)
0.6%p 가 , 3.7% 10
15 29
39 4,000 8.0% , (02 10
) 6.2% (03 10) 7.3%

	2001	2002	2003						2004	
			Q1	Q2	Q3	9	10	11	(E)	(E)
(%)	3.8	3.1	3.6	3.3	3.3	3.2	3.3	3.4	3.5	3.3
()	845	708	806	751	730	730	765	792	790	780
()	21,572	22,169	21,633	22,303	22,301	22,301	22,452	22,425	22,300	22,600

對外 去來

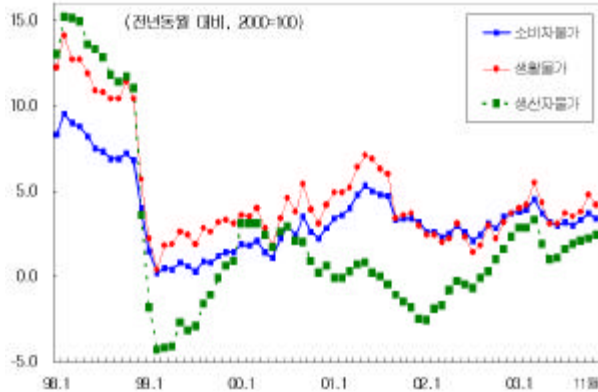


11 186.2 22.5%,
 157.6 12.6% 가
 가 10 24.5 28.6
 , 10 134.5
 가 ,
 134.5

(: 億)

	2001	2002	2003.2/4	3/4	10	11	2003(E)	2004(E)
	1,504.4	1,624.7	460.9	479.9	189.7	186.2	1,950	2,106
	1,411.0	1,521.3	416.8	429.2	165.2	157.6	1,800	2,010
	82.4	60.9	25.2	41.7	25.2	-	100	60
	134.9	141.8	57.0	71.6	30.7	-	-	-
	-38.3	-74.6	-16.2	-26.6	-3.3	-	-	-
	-12.0	4.5	-9.9	5.3	0.1	-	-	-
	-2.3	-10.8	-5.6	-8.5	-2.2	-	-	-
가	-32.7	15.2	20.0	51.0	-	-	-	-
가	1,028.2	1,214.1	1,316.6	1,415.3	1,433.2	1,533.9	-	-

物價



11 가 , 가
 -0.2%
 3.4% , 1 11
 3.6% 가
 가
 가
 가
 가

	2002	2003					2004	
		1/4	2/4	3/4	10	11	(E)	(E)
가	2.7	4.5	3.0	3.3	3.7	3.4	3.5	3.0
가 ()	-0.3	3.3	1.1	2.1	2.2	2.4	-	-
가 (%)	2.5	5.5	3.1	3.8	4.8	4.2	-	-
WTI 가(\$/bbl,)	31.2	30.2	30.2	29.20	29.11	30.41	-	-

		1998	1999	2000	2001	2002(p)	2003(e)	2004(e)
	(%)	-6.7	10.9	9.3	3.1	6.3	2.8	4.5
	(%)	-10.1	9.4	6.7	4.2	6.2	12	4.0
	(%)	-11.7	11.0	7.9	4.7	6.8	0.9	4.1
	(%)	-21.2	3.7	11.4	-1.8	4.8	3.9	4.8
	(%)	-10.1	-10.3	-4.1	5.3	3.3	5.6	2.8
	(%)	-38.8	36.3	35.3	-9.6	6.8	2.3	4.7
()	(\$)	404	245	122	82	61	100	60
	(\$)	390	239	118	93	103	150	96
	(\$)	1,323	1,437	1,723	1,504	1,625	1,950	2,106
	가 (%)	(-2.8)	(8.6)	(19.9)	(-12.7)	(8.0)	(20.0)	(8.0)
	(\$)	933	1,198	1,605	1,411	1,521	1,800	2,010
	가 (%)	(-35.5)	(28.4)	(34.0)	(-12.1)	(7.8)	(18.3)	(11.7)
	가(,%)	7.5	0.8	2.3	4.1	2.7	3.5	3.0
	(%)	7.0	6.3	4.1	3.8	3.1	3.5	3.3
	/ \$ (,)	1,399	1,190	1,131	1,291	1,250	1,175	1,110
	()	6.95	9.03	6.70	5.91	5.11	4.3 5.0	5.0 5.5