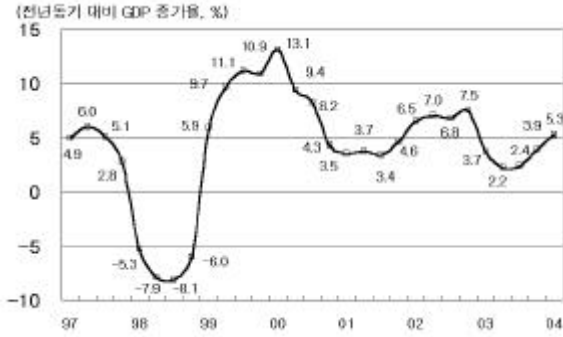


## 經濟 指標

---

- ✧ 國內總生產 1人當 GNI
  - ✧ 產業 活動
  - ✧ 國內 金融 指標
  - ✧ 國際 金融 指標
  - ✧ 雇傭
  - ✧ 對外 去來
  - ✧ 物價
  - ✧ 2004年 巨視 經濟 展望
-

□ 國內總生產 1人當 GNI

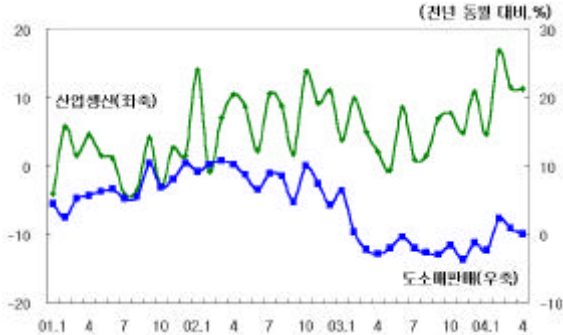


2004 1/4 가 ,  
5.3% , 4/4 3.9% .  
가  
가  
가

		2002	2003(P)	2003.1/4	2/4
( )		684.3	721.4	165.1	176.1
		5,469	6,052	-	-
1	GNI	11,493	12,646	-	-
	GDP	7.0	3.1	3.7	2.2
		7.9	- 1.4	0.3	- 1.8
	, %	7.5	- 1.5	1.9	-0.6
		5.3	7.6	8.0	7.3

: (P) , (E) .

□ 産業活動



4 가 113% , 3  
-2.5% 0.1%  
18.4% - 14.6%

		2001	2002	2003	2004					
					4/4	12	1	2	3	4
		0.7	8.0	5.1	7.8	10.9	4.7	16.9	11.6	11.3
		6.6	8.3	- 1.3	- 2.2	- 1.2	- 2.3	2.4	0.9	0.1
		- 1.0	2.1	- 8.5	- 5.0	- 9.1	12.9	12.7	30.1	18.4
	(%)	22.1	33.0	22.5	2.1	6.7	- 14.3	- 23.9	- 3.2	- 14.6
가	(%)	75.3	78.4	78.3	80.4	80.4	80.4	83.4	80.6	80.5
( , %)		0.23	0.06	0.08	0.06	0.08	0.05	0.05	0.06	0.06

: 1) 가 2000 , 2)

國內 金融 指標

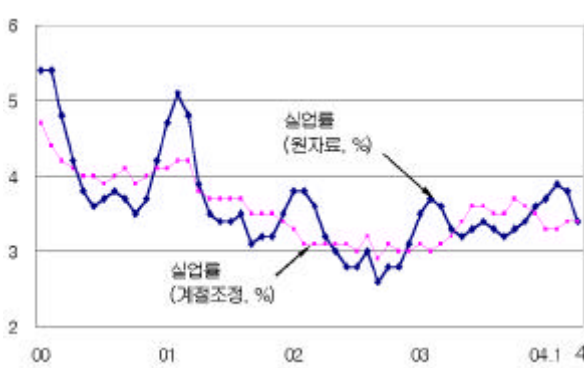
, 가  
가, 5 , 對美 가 ,  
가



HRI

	2003				2004			
	Q1	Q2	Q3	Q4	Q1	4	5	6.7
Dow Jones 가	7,992.2	8,985.4	9,380.2	10,453.9	10,470.6	10,225.6	10,117.3	10,391.1
(10 )	3.80	3.52	4.08	4.26	4.15	4.51	4.78	4.77
(30 )	4.82	4.56	5.01	5.13	4.98	5.29	5.47	5.46
(%) LIBOR(3 )	1.28	1.12	1.16	1.15	1.11	1.18	1.19	1.40
(10 )	0.71	0.85	1.44	1.37	1.44	1.54	1.48	1.68
/	117.99	119.77	110.78	107.30	104.50	110.52	112.24	109.62
/	1.0923	1.1508	1.1595	1.2594	1.2136	1.1977	1.1887	1.2322
/100	1,044.7	996.4	1,031.51	1,119.6	1,100.9	1,062.1	1,166.2	1,050.8

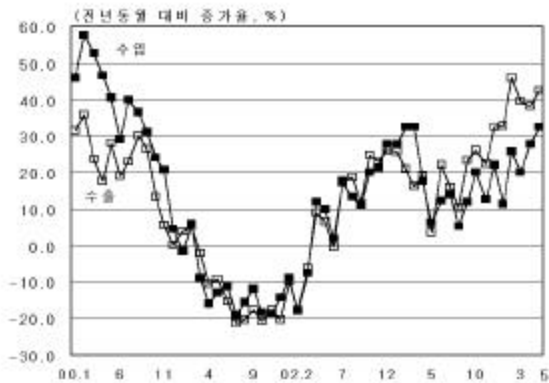
雇傭



3 0.4%p 3.4%, 3  
 7 (-8.0%) 80 9 15  
 29 0.3%p 가 7.6% 12%p 15 29  
 37 6  
 가 가

	2002	2003					2004			
		Q1	Q2	Q3	Q4	2	3	4	(E)	
(%)	3.1	3.6	3.3	3.3	3.4	3.4	3.9	3.8	3.4	3.3
( )	708	806	751	730	794	777	900	879	809	750
( )	22,169	21,633	22,303	22,301	22,325	22,139	22,001	22,371	22,673	22,300

□ 對外 去來



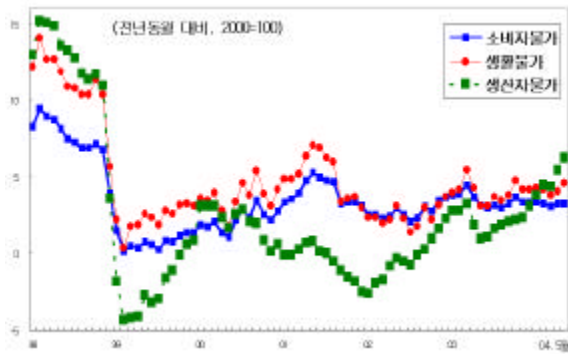
5 209.0 42.4%, 가  
 178.9 32.3% 가  
 30.1 가  
 가 가 가  
 가 가 가

( : 億 )

**HRI**

		2002	2003	1	2	3	4	5	2004(E)
		1,624.7	1,938.2	189.9	191.7	212.2	217.4	209.0	2,410
		1,521.3	1,788.3	161.4	173.9	190.5	188.3	178.9	2,210
		53.9	123.2	23.4	30.6	9.7	12.0	-	140
		147.8	221.6	29.8	31.8	26.9	33.8	-	-
		-82.0	-76.1	-7.7	-4.6	-6.5	-4.5	-	-
		4.3	6.0	3.5	5.9	-7.2	-14.4	-	-
		-16.2	-28.2	-2.2	-2.4	-3.4	-2.8	-	-
		62.5	131.3	-0.2	22.2	4.6	6.4	-	-
가		1,214.1	1,553.5	1,574.5	1,630.1	1,635.6	1,636.4	1,665.4	-

□ 物價



가 0.1% , 가 . ,  
 가 3.3% 가 . 가  
 가 4.6%, 2.7% . 2/4 가  
 가 가

		2002	2003		
			3/4	4/4	2
가		2.7	3.6	3.3	3.4
가	( )	-0.3	2.2	2.1	3.1
가	(%)	2.5	4.1	3.8	4.2
WTI	가(\$/bbl, )	31.2	32.52	29.20	32.52
					36.16

HRI

		1998	1999	2000	2001	2002	2003(P)	2004(E)
	(%)	-6.9	9.5	8.5	3.8	7.0	3.1	5.3
	(%)	-10.6	9.7	7.1	4.9	7.6	-0.5	2.6
	(%)	-13.4	11.5	8.4	4.9	7.9	-1.4	2.5
	(%)	-22.9	8.3	12.2	-0.2	6.6	3.6	4.0
	(%)	-12.4	-3.7	-0.7	6.0	5.3	7.6	2.3
	(%)	-42.3	36.8	33.6	-9.0	7.5	-1.5	6.0
(	( \$ )	404	245	122	80	54	123	140
	( \$ )	390	239	118	93	103	150	200
	( \$ )	1,323	1,437	1,723	1,504	1,625	1,938	2,410
	가 (%)	(-2.8)	(8.6)	(19.9)	(-12.7)	(8.0)	(19.3)	(24.4)
	( \$ )	933	1,198	1,605	1,411	1,521	1,788	2,210
	가 (%)	(-35.5)	(28.4)	(34.0)	(-12.1)	(7.8)	(17.6)	(23.6)
	가( ,%)	7.5	0.8	2.3	4.1	2.7	3.6	3.5
	(%)	7.0	6.3	4.1	3.8	3.1	3.4	3.3
/\$ ( , )		1,399	1,190	1,131	1,291	1,250	1,192	1,110
	( )	6.95	9.03	6.70	5.91	5.11	4.8	4.9