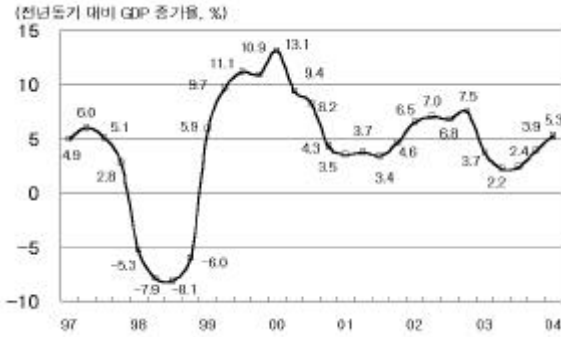


## HRI 經濟 指標

---

- ✦ 國內總生產 1人當 GNI
  - ✦ 產業 活動
  - ✦ 國內 金融 指標
  - ✦ 國際 金融 指標
  - ✦ 雇傭
  - ✦ 對外 去來
  - ✦ 物價
  - ✦ 國內 巨視經濟 實績 展望
-

□ 國內總生產 1人當 GNI

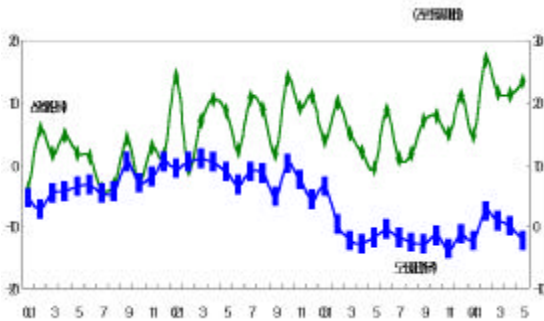


2004 1/4 가 , 5.3% , 4/4 가 3.9% , 가 , 가

		2002	2003(P)	2003.1/4	2/4	3/4	4/4	2004.1/4	2004(E)
( )		684.3	721.4	165.1	176.1	179.6	200.6	178.9	782.0
		5,469	6,052	-	-	-	-	-	6,703
1 GNI		11,493	12,646	-	-	-	-	-	-
GDP	, %	7.0	3.1	3.7	2.2	2.4	3.9	5.3	5.3
		7.9	-1.4	0.3	-1.8	-1.9	-2.2	-1.4	0.9
		7.5	-1.5	1.9	-0.6	-5.0	-2.4	-0.3	3.1
		5.3	7.6	8.0	7.3	7.9	7.4	4.1	3.4

: (P) , (E) .

□ 産業活動



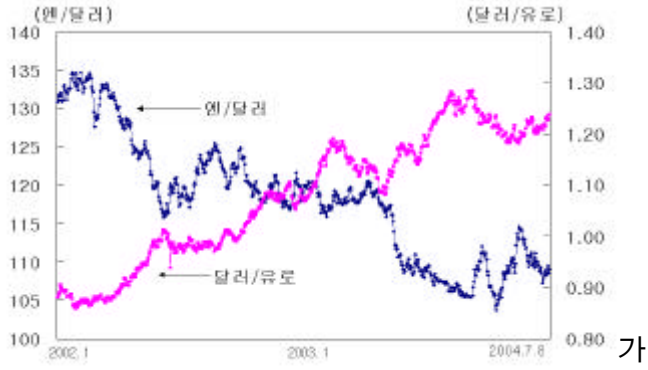
5 13.5% 가 , 4 2.3%p . 13% 가 , 2.2% 가 . -24.0% 20.1% ,

		2001	2002	2003	2004					
					4/4	12	1/4	4	5	6
가 (%)		0.7	8.0	5.1	7.8	10.9	11.0	11.2	13.5	-
		6.6	8.3	-1.3	-2.2	-1.2	0.1	0.0	-2.2	-
		-1.0	21.0	-8.5	-5.0	-9.1	19.0	18.6	20.1	-
		22.1	33.0	22.5	2.1	6.7	-14.2	-14.6	-24.0	-
가 (%)		75.3	78.4	78.3	80.4	80.4	81.5	80.5	81.3	-
( , %)		0.23	0.06	0.08	0.06	0.08	0.05	0.06	0.10	-

: 1) 가 2000 , 2) .



□ 國際金融指標



가  
가  
가

( : p, % , , )

	2003				2004			
	Q1	Q2	Q3	Q4	Q1	5	6	7.8
Dow Jones 가	7,992.2	8,985.4	9,380.2	10,453.9	10,470.6	10,117.3	10,435.5	10,171.6
(10 )	3.80	3.52	4.08	4.26	4.15	4.78	4.59	4.47
(30 )	4.82	4.56	5.01	5.13	4.98	5.47	5.30	5.22
(%)	1.26	1.08	1.03	0.93	1.03	1.00	1.13	1.26
LIBOR3 )	1.28	1.12	1.16	1.15	1.11	1.19	1.61	1.59
(10 )	0.71	0.85	1.44	1.37	1.44	1.48	1.79	1.77
/	117.99	119.77	110.78	107.30	104.50	112.24	108.78	108.99
/	1.0923	1.1508	1.1595	1.2594	1.2136	1.1887	1.2200	1.2387
/100	1,044.7	996.4	1,031.51	1,119.6	1,100.9	1,166.2	1,064.0	1,063.1

□ 雇傭



4 0.1%p 3.3%,  
0.1%p 3.5%  
4 2 1 (-2.6%) 78  
15 29  
0.1%p, 0.5%p 7.7%  
15 29 38 5  
가 48.9%

	2002	2003					2004			
		1/4	2/4	3/4	4/4	1/4	4	5	6	
(%)	3.1	3.6	3.3	3.3	3.4	3.4	3.8	3.4	3.3	-
( )	708	806	751	730	794	777	878	809	788	-
( )	22,169	21,633	22,303	22,301	22,325	22,139	22,104	22,673	22,738	-

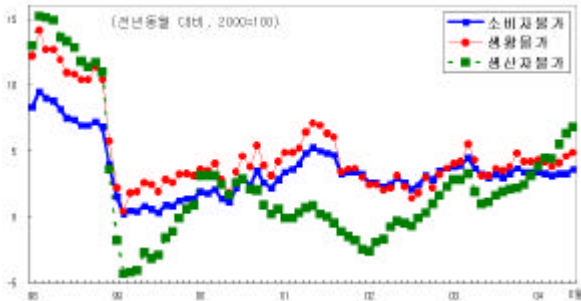
□ 對外 去來



6 218.6 39.6%,  
 186.2.9 38.6% 가  
 32.4 , 가  
 , 가  
 가 가  
 가  
 ( : 億 )

		2002	2003	2	3	4	5	6	2004(E)
		1,624.7	1,938.2	191.7	212.2	217.4	209.0	218.6	2,410
		1,521.3	1,788.3	173.9	190.5	188.3	178.9	186.2	2,210
		53.9	123.2	30.6	9.7	12.0	37.6	-	140
		147.8	221.6	31.8	26.9	33.8	38.0	-	-
		-82.0	-76.1	-4.6	-6.5	-4.5	-1.9	-	-
		4.3	6.0	5.9	-7.2	-14.4	3.0	-	-
		-16.2	-28.2	-2.4	-3.4	-2.8	-1.5	-	-
		62.5	131.3	2.2	4.6	6.4	-16.5	-	-
가		1,214.1	1,553.5	1,630.1	1,635.6	1,636.4	1,665.4	1,670.3	-

□ 物價



6 가 가  
 , 가  
 가 , 0.0%, 가  
 가 가  
 가 3.6% 가  
 가 가  
 가 4.9% , 5  
 가 가

		2002	2003			2004				
			3/4	4/4	1/4	4	5	6	(E)	
가		2.7	3.6	3.3	3.4	3.3	3.3	3.6	3.6	
가	( )	-0.3	2.2	2.1	3.1	4.2	5.5	6.3	-	
가	(%)	2.5	4.1	3.8	4.2	4.1	4.1	4.6	-	
WTI 가(\$/bbl, )		31.2	32.52	29.20	32.52	35.76	37.38	39.88	37.05	38

HRI

		1998	1999	2000	2001	2002	2003(P)	2004(E)
	(%)	-6.9	9.5	8.5	3.8	7.0	3.1	5.3
	(%)	-10.6	9.7	7.1	4.9	7.6	-0.5	1.5
	(%)	-13.4	11.5	8.4	4.9	7.9	-1.4	0.9
	(%)	-22.9	8.3	12.2	-0.2	6.6	3.6	2.4
	(%)	-12.4	-3.7	-0.7	6.0	5.3	7.6	3.4
	(%)	-42.3	36.8	33.6	-9.0	7.5	-1.5	3.1
( )	( \$ )	404	245	122	80	54	123	200
	( \$ )	390	239	118	93	103	150	245
	( \$ )	1,323	1,437	1,723	1,504	1,625	1,938	2,485
	가 (%)	(-2.8)	(8.6)	(19.9)	(-12.7)	(8.0)	(19.3)	(28.2)
	( \$ )	933	1,198	1,605	1,411	1,521	1,788	2,240
	가 (%)	(-35.5)	(28.4)	(34.0)	(-12.1)	(7.8)	(17.6)	(25.3)
	가( ,%)	7.5	0.8	2.3	4.1	2.7	3.6	3.6
	(%)	7.0	6.3	4.1	3.8	3.1	3.4	3.5
	/ \$ ( , )	1,399	1,190	1,131	1,291	1,250	1,192	1,120
	( )	6.95	9.03	6.70	5.91	5.11	4.8	4.8